

IQALUGAARJUUP NUNANGA

territorial park

HERITAGE APPRECIATION PLAN



March 2022

Approved by the Community Joint Planning and Management Committee for Iqalugaarjuup Nunanga Territorial Park.

Nunavut Parks and Special Places Contact:

Director, Nunavut Parks and Special Places Division
Department of Environment, Government of Nunavut
P.O. Box 1000, Stn. 1340, Iqaluit, Nunavut, X0A 1A0
Ph: 867-975-7703 Fax: 867-975-7747 www.nunavutparks.com

Prepared by: NVision Insight Group, Inc.

Cover photo: Doug McLarty

Report photos: Nunavut Parks / NVision unless otherwise noted



ACKNOWLEDGEMENTS

The following individuals are recognized for their assistance and support.

The Community Joint Planning and Management Committee (CJPMC) for Iqalugaarjuup Nunanga prepared the 2022 Iqalugaarjuup Nunanga Heritage Appreciation Plan. The CJPMC members are:

- David Kakuktinniq - Chair
- Levinia Brown
- Robert Connelly
- Alan Everard
- Michael Shouldice
- Tom Sammurtok
- and past member:
- Karlene Napayok

The CJPMC acknowledges the families and individuals that have shared their knowledge about the park since its establishment:

- **The 1991 Hamlet of Rankin Inlet Park Advisory Committee** members whose contributions led to the establishment of Iqalugaarjuup Nunanga: Mayor Paul Kaludjuk, Jack Kabvitok, David Oolooyuk, Tom Thompson, Marla Limousin, Thomas Tiktak, Alison Wynn-Barr, and Alan Everard.
- Mary Ann Taparti
- Moses Aliyak
- Cecelia Kablalik
- Ollie Ittinuar
- Paul Pissuk
- Jennie Tootoo
- Simon Tywee
- Page Burt
- Jerome Tattuinee
- Paul Kanayok Sr.
- Phillip Nukapiak

The CJPMC would like to recognize the residents that contributed their knowledge of the park during the planning activities in 2019 that informed this Heritage Appreciation Plan:

- Adele Angdlik
- Andy Aliyak

- Billy Tywee
- Frances Kaput
- Jim MacDonald
- John Tatty
- Juani Nattar
- Justin Merritt
- Martha Hickes
- Mary and Steve Fredlund
- Noah Makaynk
- Noel Kaludjak
- Paul Kaludjak
- Raymond Taparti
- Rosie Oolooyuk
- Tommy Tudluk
- Violet Tywee

The CJPMC would like to thank Britannia Tywee, community interviewer, for her assistance during past research and community engagement.

The CJPMC would like to acknowledge the following organizations and staff for their assistance:

- Kivalliq Inuit Association (KIA)
- Hamlet of Rankin Inlet
- Kangiqliniq Hunters & Trappers
- Agnico-Eagle Mines Ltd.
- Rankin Inlet Healing Facility
- Kivalliq Regional Visitor Centre
- Nunavut Arctic College (NAC)
- Natural Resources Canada (NRCan), Geological Survey of Canada
- Crown-Indigenous Relations and Northern Affairs Canada (CIRNAC)
- Government of Nunavut (GN): Environment (DoE); Economic Development and Transportation; Community Government and Services; Education; Health; and Justice
- Inuit Heritage Trust (IHT)
- Nunavut Wildlife Management Board (NWMB)



Photo: Doug McLarty

EXECUTIVE SUMMARY

Iqalugaarjuup Nunanga Heritage Appreciation Plan

Iqalugaarjuup Nunanga Territorial Park, located in Rankin Inlet, welcomes residents and visitors to spend time on the land for harvesting, recreational activities, social gatherings, and to learn about Inuit history and culture. Iqalugaarjuup Nunanga is home to several historic archaeological sites that take you back to the nomadic lifestyle and dwellings that Inuit ancestors lived. It is along the paths of many migrating animals such as caribou, fish, and difference species of birds. It is a piece of land that provides to families in Rankin Inlet fresh water, berries, and meat. Iqalugaarjuup Nunanga Territorial Park is a source of pride and history for the residence of Rankin Inlet.

Through Iqalugaarjuup Nunanga's Heritage Appreciation Program, unique stories, and information about the park and its resources are shared with visitors to help teach the value of heritage as well as how to respect and protect resources. The Heritage Appreciation Program is also meant to encourage people to consider new perspectives and participate in new experiences, broadening their knowledge and understanding of the park's significance.

The following Heritage Appreciation Plan (HAP) aims to provide Nunavummiut, park visitors and other audiences with increased awareness of Iqalugaarjuup Nunanga's natural and cultural heritage through a variety of communication tools and interpretive programs that draw on the park's theme, "the land around the river of little fishes". It is an opportunity to educate visitors by sharing stories that illustrate the cultural significance that this important place has for Inuit. The Master Plan for Iqalugaarjuup Nunanga identifies three park-specific goals:

1. CONSERVATION AND PROTECTION
2. HERITAGE APPRECIATION
3. ENJOYMENT OF THE PARK

The Master Plan recommends controlled development and programming that contribute to the visitor experience and safety, protection of resources, and economic and social benefits for the residents of Rankin Inlet. It ensures that Inuit harvesting activities will continue in the park. Travel routes and areas used for hunting, fishing, berry picking, and other cultural practices have been considered during the planning to protect these activities. These, along with other actions in the Master Plan, were used to help develop this HAP.

The HAP identifies several objectives for heritage appreciation and presents a strategy and action plan to enable the Nunavut Parks and Special Places (NP&SP) Division in providing interpretation, education, and public communications to a variety of audiences, both within the park and within Rankin Inlet, over the next ten years.

This HAP addresses the following topics and should be used by the Rankin Inlet CJPMC, NP&SP staff, and contractors when planning and implementing the Heritage Appreciation Program at Iqalugaarjuup Nunanga:

- Existing heritage materials,
- Gaps to be addressed in the future,
- Audiences for the program and the messages to convey to each audience,
- Materials and tools required for communicating with each audience in the park, in the community, or online (including a new signage framework),
- An implementation strategy to further develop the park's Heritage Appreciation Program in the future,
- Monitoring and evaluation of the different materials/ programs to see if they are working,
- Supporting documents needed to carry out the necessary work.

The Iqalugaarjuup Nunanga HAP was developed based on recommendations presented in the Iqalugaarjuup Nunanga Territorial Park Master and Management Plans and achieves the objectives and requirements for heritage appreciation in keeping with the NP&SP Framework for Planning Heritage Appreciation/Interpretive Programs, the 2016-2021 NP&SP Heritage Appreciation Strategy, and other guiding documents for the Park and the Government of Nunavut, Department of Environment's NP&SP Division.

Organization of the Report

The Iqalugaarjuup Nunanga Territorial Park Heritage Appreciation Plan contains five main sections, as well as a collection of supporting documents and templates in the Appendix. The five main sections include:

1. **The Introduction** – Provides an overview of Kajiiasarviit: NP&SP Program with a focus on heritage appreciation..
2. **Iqalugaarjuup Nunanga Territorial Park** – Provides background on the park's context, purpose, resources, and planning requirements that directly inform the park's Heritage Appreciation Program.
3. **Essentials of Heritage Appreciation at Iqalugaarjuup Nunanga** – Identifies the interpretive theme and sub-themes, audiences, key messages and methodology that have been used to develop the HAP and should be considered when planning or developing any heritage appreciation materials for the park in the future.
4. **Iqalugaarjuup Nunanga Heritage Appreciation Strategy** – Outlines the specific programs and materials that are recommended to bring the park's Heritage Appreciation Program up-to-date and in conformity with the park's Master Plan and other statutory requirements.
5. **Iqalugaarjuup Nunanga Heritage Appreciation Implementation** – Presents the actions, timeline, and estimated budget required to complete the park's 2022-32 Heritage Appreciation Plan and identifies the responsibilities, important partnerships, and monitoring and evaluation guidelines to help ensure that implementation is successful.



Photo: Jilda Obokansak



TABLE OF CONTENTS

1	Introduction	15
1.1	Heritage Appreciation in Context.....	15
1.2	Purpose of the Iqalugaarjuup Nunanga Heritage Appreciation Plan.....	19
2	Iqalugaarjuup Nunanga Territorial Park	23
2.1	Park Context, Purpose and Vision	23
2.2	Park Resources that inform Heritage Appreciation	24
2.3	Master Plan Goals, Objectives and Proposed Actions for Heritage Appreciation.....	27
2.4	Management Issues and Challenges that inform Heritage Appreciation	30
2.5	Existing Conditions of Heritage Appreciation at Iqalugaarjuup Nunanga	33
3	Essentials of Heritage Appreciation at Iqalugaarjuup Nunanga	39
3.1	Themes	39
3.2	Audiences.....	42
3.3	Key Messages.....	50
3.4	Heritage Appreciation Planning Methodology	53
4	Iqalugaarjuup Nunanga Heritage Appreciation Strategy	59
4.1	Signage and Displays	59
4.2	Promotional and Informational Materials.....	84
4.3	Public Communications	87
4.4	Community/Cultural Events	88
4.5	Park-Specific Education Programs.....	88
4.6	Special Projects	91
4.7	Interpretive Training Tools	93
4.8	Annual Student Award.....	94
4.9	Updates to the Park's Image, Video and Document Collection	94

5	Iqalugaarjuup Nunanga Heritage Appreciation Implementation.....	99
5.1	Actions Required to Complete Iqalugaarjuup Nunanga’s Heritage Appreciation Program	99
5.2	Implementation of Recurring Heritage Appreciation Programs	99
5.3	Checklist for Annually Recurring HA School Outreach.....	107
5.4	Requirements and Responsibilities for Implementation.....	107
5.5	Program Monitoring and Evaluation.....	109
6	Appendices	117
6.1	Glossary/Acronyms	119
6.2	IIBA Obligations Related to Heritage Appreciation.....	120
6.3	Inventory of Existing Signage and Displays	121
6.4	Communication Templates	122
6.5	Parks Day.....	123
6.6	Sample Brochure Templates	124
6.7	‘Learn-to’ Materials.....	125
6.8	Youth Camp Sample Documents.....	126
6.9	Sample Education Materials.....	127
6.10	Culturally-Appropriate Consultation Techniques	128
6.11	Iqalugaarjuup Nunanga Seasonal Calendar	129
6.12	Iqaluit Seasonal Cycle (WIP/ in draft)	130
6.13	Sample Bibliographic Guide to the Photo and Document Archive	131







1



1 INTRODUCTION

Nunavut parks and special places are among the best sites in Nunavut for learning about our natural and cultural heritage. Parks and special places provide educational and recreational experiences that can foster the development of conservation and stewardship values in Nunavummiut and our visitors.

1.1 HERITAGE APPRECIATION IN CONTEXT

The Government of Nunavut, Department of Environment's Nunavut Parks and Special Places Division (NP&SP) develops and manages the natural and cultural heritage of Nunavut through a territorial program that focuses on five areas:

1. Parks Program Development, including Canadian Heritage Rivers;
2. Parks Planning & Establishment;
3. Parks Facilities and Operations Planning;
4. Parks Heritage Appreciation; and
5. Parks Geospatial & Information Technology.

Through the fourth area, Heritage Appreciation, NP&SP:

- Supports and celebrates the protection and stewardship of Inuit natural and cultural heritage (culture, language and relationships with the land);
- Engages communities, partners, Nunavummiut and visitors through information and educational experiences; and
- Supports the development of heritage experiences that can provide economic and recreational benefits for Nunavummiut and visitors.

Heritage Appreciation provides Nunavummiut, visitors and other stakeholders with an opportunity to increase their awareness of the natural and cultural heritage in our parks and understand the role of parks within Nunavut. Heritage Appreciation is accomplished by engaging visitors in the story of a park, by the communications presented to the public by the Division, and by providing educational opportunities.

By achieving the goals under Heritage Appreciation, we can also effectively satisfy the heritage appreciation-related requirements in the other areas.

Heritage Appreciation is a critical component in achieving the mission and goals of Kajjausarviit: Nunavut Parks Program, and in fulfilling the Division's obligations under the Inuit Impact and Benefit Agreement for Territorial Parks (IIBA). As such, the role of heritage appreciation must be considered by GN staff, by Joint Planning and Management Committees, and by contractors working on behalf of NP&SP, in all planning, communication, education and experience-based activities offered through Nunavut Parks. The planning and implementation for Heritage Appreciation under Kajjausarviit: Nunavut Parks Program occurs both as Nunavut-wide initiatives, and at the park-specific scale.

Vision Statement for the Nunavut Parks Heritage Appreciation Program:

Heritage appreciation celebrates the unique relationship of the heritage of Inuit culture, environment and resources that are a part of our parks. Our Heritage Appreciation Program connects communities to their parks, and will reach every Nunavummiut and park visitor to increase their understanding, enjoyment and stewardship of the cultural and natural heritage in Nunavut's Parks.



1.1.1 HERITAGE APPRECIATION AND KAJJAUSARVIIT: NUNAVUT PARKS PROGRAM

Kajjausarviit: Nunavut Parks Program seeks to achieve the following three goals:

Goal 1: Protect Nunavut's Natural and Cultural Landscapes

Nunavut's Parks identify, protect and promote Nunavut's natural and cultural heritage; its biodiversity, integrity, and its unique and valued natural and cultural landscapes and resources.

- Through heritage appreciation, Nunavummiut and visitors will share knowledge of the significance of the natural and heritage resources in our territory, and the importance of stewardship of these resources.

Goal 2: Engage the Community in Heritage Appreciation and Conservation

Nunavut's Parks foster pride, understanding, knowledge, and appreciation of the Territory's diverse and unique natural and cultural heritage for both residents and visitors.

- Heritage appreciation planning, management and operational actions are prepared through joint planning and management with park communities.
- Heritage appreciation documents and shares information on the current and past uses of a park's natural and cultural resources.
- Heritage appreciation provides programs and activities for residents and visitors that promote and celebrate the natural and cultural heritage of our parks.

Goal 3: Enhance Community and Visitor Experience

Nunavut Parks promote opportunities for appropriate, safe and accessible recreation and increased public enjoyment consistent with the protection of the natural and cultural values. They are important destinations and attractions for Nunavummiut and visitors, providing direct and indirect economic benefit to communities.

- Heritage appreciation provides programs and activities in our parks and communities that encourage active participation of Nunavummiut and visitors.
- Heritage appreciation develops tools and key messages for NP&SP to communicate directly and indirectly with Nunavummiut, park visitors and partners.
- Through the heritage appreciation, NP&SP increases awareness among, and educates Nunavummiut and park visitors.

1.1.2 GOALS AND GUIDELINES FOR THE HERITAGE APPRECIATION PROGRAM

The NP&SP Heritage Appreciation Program sets out a vision for Nunavut's Parks, defines the goals and principles that drive the Program, and describes the parks joint planning and managing requirements.

NP&SP's vision for heritage appreciation states:

Heritage appreciation celebrates the unique relationship of the heritage of Inuit culture, environment and resources that are a part of our parks. Our Heritage Appreciation Program connects communities to their parks and will reach every Nunavummiut and park visitors to increase their understanding, enjoyment and stewardship of the cultural and natural heritage in Nunavut's Parks.

The primary goals of heritage appreciation – to increase awareness and promote stewardship of the natural and cultural heritage in Nunavut Parks – can be achieved through a variety of approaches in our parks:

1. Interpretative displays and signage;
2. Interpretation delivered by park staff and local tourism providers;
3. Cultural events in affected communities and parks;
4. Educational programs and career development in communities and in parks;
5. Promotional and informational materials;
6. Public Communications;
7. Promotion of Inuit business and tourism providers; and
8. Promotion and sale of local arts and products.

In some parks, heritage appreciation may also be enhanced through special projects such as archaeological sites inventories or oral history projects, which contribute data and understanding of heritage resources or sites of significance to Inuit.

To ensure that all Nunavut Park heritage appreciation planning is done in a consistent manner across Nunavut, and establish strategic goals for the Heritage Appreciation Program, NP&SP has created two guiding documents: *The Framework for Planning Heritage Appreciation/Interpretive Programs*, and *The Nunavut Parks and Special Places Heritage Appreciation Strategy*. These documents are linked to a series of planning frameworks that represent a comprehensive, consistent and integrated planning and management system to guide Kajaiaurviit: Nunavut Parks Program.



1.1.2.1 Framework for Planning Heritage Appreciation/Interpretive Programs

The Framework for Planning Heritage Appreciation/Interpretive Programs (HA Framework) provides direction on the protocol for park heritage appreciation programs, the engagement of the public, communities and specifically youth, and key messages that NP&SP aims to communicate in all parks. NP&SP has specific obligations under the NA (primarily Articles 8 and 9) and the IIBA. The HA Framework identifies and defines those statutory requirements and sets out measures and approaches to ensure that the obligations related to heritage appreciation are met. The framework also explains the relationship between heritage appreciation and the goals of Kajjausarviit: the Nunavut Parks Program.

Included in the HA Framework are detailed guidelines for visual identity and content of any materials that will be prepared under the NP&SP Heritage Appreciation Program (Program), including interpretative, communication, and educational elements. These guidelines identify each element of the Program, define the minimum requirements for the content, and provide a standard for the quality and consistency of materials to ensure consistency in all Nunavut Parks and Program activities. The HA Framework must always be consulted when undertaking any planning or development activity related to heritage appreciation.

Section 4 of the HA Framework includes specific guidelines for the following elements to aid in the planning and development of park-specific heritage appreciation plans:

- Visual Guideline Identity
- Print Material
- Presentation Material
- Park infrastructure and Display
- Public and Cultural Events
- Educational Materials
- Media (Public Communications)

The HA Framework is also used to inform divisional five-year strategies, which will be discussed next.

1.1.2.2 Heritage Appreciation Strategy

The purpose of the *Heritage Appreciation Strategy* (HA Strategy) is to guide the Division's heritage appreciation planning over a five-year period, toward achieving the Program's vision. The term of the HA Strategy is five years but it may also identify longer-term goals that may be implemented over a longer timeframe. The HA Strategy is developed to ensure compliance with the Government of Nunavut's obligations under the NA and IIBA, and will be reviewed and renewed by NP&SP every five years.

The current HA Strategy (2016-21) includes goals and objectives that are both Nunavut-wide and park-specific. The HA Strategy aims to achieve NP&SP's vision for heritage appreciation through planning and activities in five key areas:

1. Park Interpretive Programs
2. Inuit Tourism Strategies
3. Community Events
4. Education and Youth Programs
5. Communications

For each of these areas, the HA Strategy sets out a strategic goal and related objectives, several of which can be accomplished through the completion and subsequent implementation of park-specific heritage appreciation plans. These specific goals and objectives are detailed in section 3 of the 2016-21 HA Strategy.

1.2 PURPOSE OF THE IQALUGAARJUUP NUNANGA HERITAGE APPRECIATION PLAN

A park-specific Heritage Appreciation Plan (HAP) provides a comprehensive strategy for an individual park's approach to interpretation, communication, education, regulation, events and outreach. This includes the development of any heritage appreciation materials or programs identified in the master plan, and actions required by a management plan to address heritage resource management in the park. Park-specific HAPs must follow the requirements specified in the HA Framework, and should also seek to accomplish the goals and objectives of the HA Strategy.

A Heritage Appreciation Plan for a specific park, such as Iqalugaarjuup Nunanga Territorial Park, near Rankin Inlet, provides an opportunity for NP&SP to enhance the understanding of the role of the park in the community and the importance of the park within Nunavut. For Iqalugaarjuup Nunanga, these roles include protecting, celebrating and sharing the park's significant resources through interpretation, education and other communications. Iqalugaarjuup Nunanga is a very important place that provides Inuit and visitors to Rankin Inlet with a place to harvest, relax, or experience beautiful scenery, and the HAP can highlight what a visitor can expect from their visit to the park. The HAP describes how stories and information will be shared, and explains the regulations that protect the park, its resources, and the people that use the park.

The HAP for Iqalugaarjuup Nunanga can fulfill the mandate of the NP&SP Program by addressing its mission and three goals. The Mission of NP&SP is *"To ensure our natural and cultural heritage is protected, enjoyed, and appreciated using collaborative planning and management processes through Kajjausarviit: Nunavut Parks Program."*

Through the Iqalugaarjuup Nunanga HAP, NP&SP will:

- **Support the protection and stewardship of the park's natural and cultural heritage.** Iqalugaarjuup Nunanga is a dynamic landscape that contains multiple areas with known and unknown cultural resources, and areas that are important to wildlife and vegetation. The HAP can inform park users on how to use the park in a respectful and sustainable way so that human and natural disturbances are minimized in sensitive areas. The cultural sites in the park are also at risk of being impacted, and the HAP can inform visitors of the regulations concerning the park's cultural resources.
- **Celebrate the heritage of the park through the interpretive theme "The land around the river of little fishes".** The unique story of the park will be shared with the community and visitors to demonstrate the value of the natural and cultural landscapes and resources. Through the HAP, traditional and scientific knowledge about the park will be recorded and shared for the purpose of developing awareness of the cultural significance of the park to ensure this knowledge is carried forward for future generations; and,
- **Engage the community of Rankin Inlet and visitors with the park through information, educational experiences, and communications about the park.** Iqalugaarjuup Nunanga offers all visitors an exceptional recreational and educational experience. An aim of the HAP is to engage residents and visitors with the park and foster pride and appreciation of the park's diverse and unique natural and cultural heritage. The HAP will promote opportunities for appropriate, safe, and accessible recreation, and increased public enjoyment consistent with the protection of the natural and cultural values.

The Iqalugaarjuup Nunanga HAP should also stimulate opportunities for the development of heritage-related experiences among local outfitters and result in economic and recreational benefits for Nunavummiut and visitors. For example, guided/escorted tours are currently available through outfitters and guides in Rankin Inlet, or tourists can plan self-guided trips to the park. These opportunities can be enhanced through the development of heritage appreciation materials and tools that are designed to support local tourism initiatives and can be linked to the Rankin Inlet Tourism Strategy (discussed later in section 5.4).

The Iqalugaarjuup Nunanga HAP can also address the principles and objectives of the IIBA for park information, materials and facilities. The IIBA articles and provisions specific to park interpretative programs and the planning or development of heritage appreciation programs are referenced throughout the HA Framework.

Park-specific HAP implementation will require both short term (1- 10 years) and long-term (beyond 10 years) actions and delivery. The resources required to implement the Iqalugaarjuup Nunanga HAP will be considered in the annual budgets of NP&SP and collaborating departments, and in any park-specific work plans and budgets prepared by the Rankin Inlet Community Joint Planning and Management Committee (CJPMC) and approved by the Nunavut Joint Planning and Management Committee (NJPMC).





Photo: Doug McLarty

2 IQALUGAARJUUP NUNANGA TERRITORIAL PARK

This section summarizes the legislated purpose of Iqalugaarjuup Nunanga Territorial Park, and describes its overall significance based on the 2019 Master Plan. It also presents a summary of the park's goals and objectives that relate to heritage appreciation, and provides an inventory of the park's existing heritage appreciation infrastructure and materials. This information provides important background on the park and forms the basis and justification for the future actions that will be recommended in this Plan to complete Iqalugaarjuup Nunanga's Heritage Appreciation Program..

2.1 PARK CONTEXT, PURPOSE AND VISION

2.1.1 PARK CONTEXT

Iqalugaarjuup Nunanga Territorial Park, located in Rankin Inlet, welcomes residents and visitors to spend time on the land for harvesting, recreational activities, social gatherings, and to learn about Inuit history and culture.

The park protects 2,098 hectares of land just a short drive north from the community. Scenic views of the tundra and Meliadine River can be experienced from the esker feature that runs in a north-south direction through the centre of the park. The esker has been an important landscape feature for wildlife and the Thule and Inuit cultures that historically occupied the area. Evidence of past use of the area is demonstrated through numerous archaeological and cultural features clustered along the esker. Qamaviniqtaalik, a territorially significant historic site located in the park, protects and presents the dwellings and features of camp life that were left by our ancestors. The natural habitat of the park supports migrating caribou, birds and raptors, small mammals, and fish.

The current park classification of Iqalugaarjuup Nunanga Territorial Park is “Community Park” under the Territorial Parks Act; however, the Iqalugaarjuup Nunanga CJPMC has recommended reclassifying the park as an “Outdoor Recreation Park” (or its equivalent). As described in the Master Plan, this reclassification is to “Provide a park that protects areas that have been used by Inuit or previous cultural groups in the past, and areas that continue to be enjoyed by Nunavummiut today for recreational activities. [...] The highest priority of this classification is to provide opportunities for outdoor recreation and heritage appreciation that highlights the significance of the park and the interaction of Inuit with the place.” For the purpose of this HAP, recommendations will be aligned to the requirements of the park's proposed new classification as an Outdoor Recreation Park.

Other land use designations will contribute to the park's heritage appreciation:

- *Adjacent IOL and Municipal Lands* – Iqalugaarjuup Nunanga is located within the boundary of the Municipality of Rankin Inlet, and adjacent to Inuit Owned Land. This proximity offers the potential for partnership and cooperation between the three organizations, which share a common interest in seeing the park succeed.

2.1.2 PARK PURPOSE

The IIBA and NP&SP Park Program recognize the importance of Inuit culture and heritage, and the importance of protecting, conserving, presenting, and providing visitor experience through parks. The program and IIBA recognize the importance of Inuit Qaujimajatuqangit in the planning, management, and programs for the park.

The purpose for Iqalugaarjuup Nunanga Territorial Park, as confirmed through the CJPMC is to:

- Provide a rich and welcoming experience for all park users;
- Enhance the experience and understanding of Iqalugaarjuup Nunanga's unique environment and its rich cultural heritage;
- Protect the natural and cultural landscapes which represents the Kivalliq and Nunavut;
- Provide opportunities and encourage future benefits to expand the number of people to enjoy and learn from the land;
- Ensure Rankin Inlet residents, especially Inuit and youth, benefit both culturally and financially from the park; and
- Be developed and managed sustainably for future generations.

2.1.3 PARK VISION

The following vision expresses the long-term ambitions for the park and the enduring value that Iqalugaarjuup Nunanga provides for the people of Rankin Inlet and Nunavut. The vision provides the context for the strategic goals and actions in the Master Plan and Management Plan.

Vision Statement for Iqalugaarjuup Territorial Park

Iqalugaarjuup Nunanga Territorial Park is a peaceful place to enjoy and learn from our land, wildlife and culture. Appreciate and be inspired by the connection of the natural environment and Inuit heritage.

2.2 PARK RESOURCES THAT INFORM HERITAGE APPRECIATION

Iqalugaarjuup Nunanga Territorial Park, located in Rankin Inlet, protects sites of cultural significance and the scenic landscape along a portion of the Meliadine River. The park offers an exceptional recreational experience that is easily accessed from the community. Residents of Rankin Inlet enjoy spending time on the land, fishing, berry picking, swimming, collecting water and ice, participating in educational activities and holding social gatherings in the park; and visitors to the Kivalliq Region travel to the park to see the land and learn about history and culture. Fishing for Arctic char takes place in the park during the fishes' annual migration up the river. Local hunters harvest caribou in and near the park year-round, particularly during the annual caribou migration. There are also many community events that are held annually in or around the park boundary, such as the Rankin Inlet Fishing Derby. When possible, the Heritage Appreciation Program will support all such community cultural events that are related to the park or park landscape.

The Meliadine River and a prominent esker are both important features within this landscape that contribute to the beauty and history of the park. For generations people have travelled and camped along the esker to have access to the resources of the river, herds of migrating caribou, and migrating birds. Evidence of past use is demonstrated through numerous archaeological and cultural features in the park, with the most impressive collection presented at a site called Qamaviniqtaalik. This site includes subterranean houses, tent rings, caches, kayak stands and other historical features that are associated with seasonal fishing or caribou hunting, likely in spring and fall.

Several previous reports, including the park's original master and management plan (see "Management Zones" chapter included in the 1991 Master Plan), a number of oral history and archaeological studies, as well as the 2019 *Iqalugaarjuup Nunanga Territorial Park Complete Inventory of Park Resources*, identify and contain information about the most significant resources found at Iqalugaarjuup Nunanga.

In keeping with the park's current Master Plan, the following resources should be highlighted in Iqalugaarjuup Nunanga's Heritage Appreciation Program:

Natural Resources

- Hydrology
- Vegetation
- Fish
- Terrestrial wildlife
- Birds and raptors
- Geology and Physiography



Photo: Doug McLarty

Cultural Features

- Harvesting and Important Wildlife Areas
- Archaeological Sites and Culturally Significant Sites
- Legends and Place Names
- Travel Routes

The Iqalugaarjuup Nunanga Territorial Park Inventory of Park Resources (2019) describes the natural resources, environment, and cultural heritage of the park. The Inventory captures the strong association for the residents of Rankin Inlet with the park, its history, and the surrounding landscape. This includes the continuous use of Iqalugaarjuup Nunanga as a seasonal harvesting area, travel route, and place of cultural significance. A Statement of Significance is provided in the Inventory of Park Resources as a summary of the resources and values of a park.

The Statement of Significance guides how the park master plan must address protection or conservation of key features, maintain Inuit rights, and provide benefits to the community. The Statement of Significance can be used in Iqalugaarjuup Nunanga's heritage appreciation materials to emphasize the park's importance to the people of Rankin Inlet. Additionally, information collected during the Inventory process can be used to craft communication materials around the significant resources of the park.

The Statement of Significance for Iqalugaarjuup Nunanga is:

Iqalugaarjuup Nunanga Territorial Park, located north of the community of Rankin Inlet, protects and presents the natural resources and cultural history of this significant landscape. Iqalugaarjuup Nunanga means “the land around the river of little fishes”, referring to the land within the watershed of the Meliadine River. Qamaviniqtaalik, one of many cultural sites protected in the park, is a site of territorial importance set on a hillside above the river. Qamaviniqtaalik presents culture features from a mixture of cultures; from late Thule culture to historic Caribou Inuit. The legends and stories from Qamaviniqtaalik continue to be shared; connecting people to the past. Alongside the features of the site, the stories of Inugarulik (little people), and Ijiraq (shadow, hider, or partly human/partly spirit people) animate this special place in the park.

The park's setting is defined by an esker ridge that runs in a north-south direction and the Meliadine River valley. The park provides important habitat for migratory mammals, birds, raptors and fish. An important annual event is the migration of the caribou herd in auyuq (summer). The park also supports a nationally significant Peregrine Falcon population with feeding habitat and a nesting site.

Iqalugaarjuup Nunanga Territorial Park is an important recreation area and contributes to the quality of life for Rankin Inlet's residents. It is a place to share Inuit culture and maintain a connection to our heritage.



2.3 MASTER PLAN GOALS, OBJECTIVES AND PROPOSED ACTIONS FOR HERITAGE APPRECIATION

The Iqalugaarjuup Nunanga Master Plan sets out the goals and objectives that are intended to guide planning and management to achieve the park's vision and purpose. There are three goal statements for Iqalugaarjuup Nunanga. Each goal includes objectives or specific actions that are part of the planning and management approach for the park.

The goals and objectives for Iqalugaarjuup Nunanga Territorial Park are as follows:

GOAL 1: CONSERVATION AND PROTECTION

The natural and cultural heritage of Iqalugaarjuup Nunanga is protected for future generations through joint planning and management between Inuit and the Government, and operational actions that are informed by Inuit Qaujimagatuqangit and an Environment Connection approach to management.

GOAL 2: HERITAGE APPRECIATION

Iqalugaarjuup Nunanga connects us to our past and educates all park users about our history and the cultural significance of this place through a Heritage Appreciation Plan.

GOAL 3: ENJOYMENT OF THE PARK

Iqalugaarjuup Nunanga continues to be used for wildlife, relaxation and to share Inuit traditional knowledge. The safe and sustainable use of the park will be supported by infrastructure, planning and management.

Specific to the second goal, *Heritage Appreciation*, the Rankin Inlet CJPMC has identified the following objectives related to heritage and culture education, awareness, and information sharing:

- Share stories and information of the park;
- Enhance knowledge of the history of Iqalugaarjuup Nunanga;
- Reach various audiences by providing programs and interpretation that meet the specific needs of each audience;
- Provide programs and interpretation in the park and community;
- Be accessible as online resources and using appropriate technology in the park to enhance the visitor experience;
- Update the existing Iqalugaarjuup Nunanga information booklet;
- Develop a park display for the Kivalliq Regional Visitors Centre and other public buildings in Rankin Inlet (where appropriate);
- Prepare and deliver education through tool kits prepared for students or youth that are out of school;
- Develop partnership opportunities for science camps and encourage the use of the park as an outdoor classroom;
- Promote sustainability by sharing messaging and education about sustainable and minimal impact use of the park; and the rules, regulations, and best practices when visiting the park.

Specific to the third goal, *Enjoyment of the Park*, the Rankin Inlet CJPMC has identified the following objectives related to public safety, positive user experiences, and tourism:

- Share regulations aimed at keeping park users safe through signage, print materials, communications, and programs.
- Provide infrastructure and programs to support park recreational uses.
- Supporting traditional, healing, and learning activities, and family gathering in the park.
- Planning for park related tourism and economic benefits through a Rankin Inlet Tourism Strategy, and aligned with the territorial *Tourism Strategy*.

To meet these goals and objectives for the park, the Iqalugaarjuup Nunanga HAP takes an approach that includes a variety of programs designed to bring information and awareness about to the park to several different audiences, including Schools/Education, Residents, and Tourists. It also includes projects and recommendations that will support the continued documentation of Inuit Qaujimagatuqangit about Iqalugaarjuup Nunanga and ensure that resources to support the park's Heritage Appreciation Program will be up-to-date and accessible. Lastly, it effectively reflects the Master Plan's priorities for Iqalugaarjuup Nunanga's Heritage Appreciation Program.

2.3.1 STRATEGIC OBJECTIVES FOR IQALUGAARJUUP NUNANGA'S HERITAGE APPRECIATION PLAN

With the above-mentioned goals and objectives in mind, the Iqalugaarjuup Nunanga HAP aims to achieve the following strategic objectives. Listed below each objective are the Heritage Appreciation Program components that are recommended as actions to achieve the desired outcome and fulfill all statutory requirements for the park.

Objective: *Enhance knowledge of the history of Iqalugaarjuup Nunanga by gathering and documenting Inuit Qaujimagatuqangit, other knowledge, and resources to support the park's Heritage Appreciation Program. (Addresses Goal 2)*

Target Audience: All Audiences

Recommended programs and activities:

- Special Projects, which will all include the collection and documentation of oral histories:
 - Archaeological Surveys,
 - Climate and Permafrost Monitoring,
 - Qamaviniqtaalik Historic Site Augmented Reality
 - Sod House Reconstruction Project, and
 - Sandy Lake Vegetation Regeneration Project.
- Updates to Park Image and Video Collection

Objective: *Provide Heritage Appreciation and Interpretive Programs to a variety of audiences that share Inuit Qaujimagatuqangit, the unique story of Iqalugaarjuup Nunanga through the theme “The land around the river of little fishes”, and key messages that inform and encourage sustainable use of the park. (Addresses Goal 2 & 3)*

Target Audience: All Audiences

Recommended programs and tools:

- Signage and Displays
- Promotional and Informational Material (Brochures, Maps, Website)
- Interpretive Training Tools
- Inuit Tourism Strategy
- Special Project
 - Qamaviniqtaalik Historic Site Augmented Reality



Objective: *Prepare and deliver Education Programs that encourage students and youth in Rankin Inlet to learn about the park and to use it as a classroom and learning opportunity. (addresses Goal 2)*

Target Audience: Students, Youth, Community Members and Teachers in Rankin Inlet

Recommended programs:

- Education Modules
- In-park Educational Programs (Learn-to Program, Camps)
- Youth Career Development
- Annual Student Award

Objective: *Provide opportunities to increase awareness and understanding among community members, especially youth, regarding the significance of Iqalugaarjuup Nunanga's natural and cultural resources, and the rules, regulations, and best practices to use when visiting the park. (Addresses Goals 2 & 3).*

Target Audience: Residents & Visitors

Recommended tools and programs:

- Public Communications (Newsletters, Announcements, Presentations)
- Community/Cultural Events
- Inuit Tourism Strategy – Tourism operator training

Objective: *Provide infrastructure and programs to support and promote park recreational opportunities (Addresses Goal 3)*

Target Audience: Residents & Visitors

Recommended tools and programs:

- Signage and Displays
- Promotional and Informational Material (Brochures, Maps, Website)
- Community/Cultural Events – Seasonal Park Calendar
- Inuit Tourism Strategy – Seasonal Park Calendar

Objective: *Market and promote Iqalugaarjuup Nunanga through Heritage Appreciation to increase park-related tourism opportunities and park-related economic benefits, and sustainable use and travel. (Addresses Goal 3)*

Target Audience: Inuit tourism providers and businesses in Rankin Inlet

Recommended tools and programs:

- Public Communications (Newsletter, Announcement, Presentations)
- Community/ Cultural Events
- Inuit Tourism Strategy (e.g. sharing Seasonal Park Calendar)

These Master Plan goals, objectives and recommended actions for heritage appreciation form the basis of this 2022-2032 *Iqalugaarjuup Nunanga Territorial Park Heritage Appreciation Plan*.

2.4 MANAGEMENT ISSUES AND CHALLENGES THAT INFORM HERITAGE APPRECIATION

Heritage Appreciation offers an ideal opportunity to approach park management issues and challenges through education and engagement, and the Rankin Inlet CJPMC is encouraged to use the park's Heritage Appreciation Program to communicate important management messages to park users and the community. Through heritage appreciation, key messages can be communicated to park audiences to promote the sustainable use of resources and identify activities or behaviours that have a negative impact on the park.

Table D of the Iqalugaarjuup Nunanga Management Plan identifies several current management challenges and issues that will need to be addressed by NP&SP to meet the vision and goals for the park. The following table demonstrates how these same management challenges and issues can be specifically addressed by the park's Heritage Appreciation Program through using key messages and educational activities.

Several of these management issues and challenges, which may be current, short-term (1-10 years), or long-term (+10 years), are addressed through the specific strategies and actions presented in the park Management Plan and this Heritage Appreciation Plan.



Photo: Doug McLarty

Table 1: Management Challenges and Issues that can be addressed through components and key messages in the park's Heritage Appreciation Program.

Management Challenge/Issue	Heritage Appreciation Program Components						Key Messages					Specific Approach Recommendations
	Signage and Displays	Promotional and Informational Materials	Public Communication (radio shows, announcements, newsletters)	Education (in-park activities, school presentations)	Staff and Outfitter Training	Special Projects	Safe and Sustainable Travel	Minimal Impact	Safety in Bear Country	Regulations that govern Archaeological Resources	Other	
Culturally Significant Sites and Archaeological Resources <ul style="list-style-type: none">• Damage, disturbance and/or loss of culturally significant sites and archaeological resources.• Monitoring of archaeological or cultural resources is required to measure the impact of visitation.			✓	✓	✓			✓		✓		<ul style="list-style-type: none">• Take a protection, education, awareness and enforcement approach to protect the resources, and inform the public on the regulations to report/secure any found artefacts.• Archaeological Survey Special Projects could continue to research, collect data and monitor change.• Training so that park staff and outfitters can confidently inform the public on the regulations to report/secure any found artifacts.• See Management Plan 3.1 for specific instructions for planning heritage appreciation programs within areas of known culturally significant sites resources.• Providing information to guides, outfitters and Visitor Centre about the rules and regulations pertaining to the park
Sod House Reconstruction <ul style="list-style-type: none">• Rebuilding or removal required• Heritage appreciation program opportunities• Partnership agreements may be required	✓	✓	✓	✓		✓					✓	<ul style="list-style-type: none">• Develop interpretive and education programs about the project.
Protecting Important Wildlife Areas <ul style="list-style-type: none">• Fish monitoring• Raptor nesting habitats: monitoring COSEWIC listed species - Peregrine Falcon.• Caribou: managing and monitoring human impact during the annual migration.				✓	✓		✓	✓				<ul style="list-style-type: none">• Take a protection, education, awareness and enforcement approach to protect the resources, and inform the public on minimal impact travel.• Management Zoning Plan and Regulations identify guidelines for important wildlife areas.
Inuit Harvesting <ul style="list-style-type: none">• Inuit harvesting activities should not be disturbed or negatively impacted as a result of park development or visitor use.	✓	✓		✓			✓	✓	✓			<ul style="list-style-type: none">• Take a protection, education, awareness and enforcement approach to protect Inuit rights, and inform the public on minimal impact travel.• Training park staff and outfitters so they can confidently discuss Inuit Harvesting Rights with tourists or other individuals who may have questions.
Environmental Impacts and Climate Change <ul style="list-style-type: none">• Degradation of the park caused by human activity and climate change.	✓	✓	✓	✓	✓		✓	✓				<ul style="list-style-type: none">• Take a protection, education, awareness, and enforcement approach to protect the environment and resources.• Monitoring and reporting impacts.• Training park staff and outfitters so they can confidently approach park users who are violating a park regulation to inform them of the acceptable behavior(s).• Providing information to guides, outfitters and Visitor Centre about park rules and regulations.

Management Challenge/Issue	Heritage Appreciation Program Components						Key Messages					Specific Approach Recommendations
	Signage and Displays	Promotional and Informational Materials	Public Communication (radio shows, announcements, newsletters)	Education (in-park activities, school presentations)	Staff and Outfitter Training	Special Projects	Safe and Sustainable Travel	Minimal Impact	Safety in Bear Country	Regulations that govern Archaeological Resources	Other	
Park Infrastructure <ul style="list-style-type: none"> New and renovated infrastructure to support use, activities, accessibility, and address increased visitation Introduce green energy options 	✓		✓	✓							✓	<ul style="list-style-type: none"> Plan for additional facilities at appropriate locations in the park and prepare recommendations for converting infrastructure to green energy options. Replacement and new park furnishing, signage and structures will be selected based on resilience in arctic conditions and against vandalism. Assess, develop and implement an interpretive plan.
Regulations <ul style="list-style-type: none"> Maintain staffing levels required to maintain, monitor and enforce regulations in the park Develop partnerships on management and regulatory issues Communicate regulations to the public 	✓	✓	✓	✓	✓		✓	✓	✓	✓		<ul style="list-style-type: none"> Develop and implement a communication plan to inform the public on key messages for park regulations.
Safety and emergency response Public safety is a primary concern	✓	✓	✓	✓	✓		✓	✓	✓			<ul style="list-style-type: none"> Take a protection, education, awareness and enforcement approach to inform the public on safe & sustainable travel.
Heritage Appreciation <ul style="list-style-type: none"> Share the unique story of the park. Implement the IIBA obligations related to interpretation, education, events, tourism, and economic benefits. 	✓	✓	✓	✓	✓		✓	✓	✓	✓		<ul style="list-style-type: none"> Complete and implement a Heritage Appreciation Plan for the park.
Economic Benefits In-park business operations <ul style="list-style-type: none"> Inuit business opportunities to provides services or sell products in the park under special event permits Tourism <ul style="list-style-type: none"> Promote park-related tourism and Inuit tourism business opportunities 		✓	✓		✓						✓	<ul style="list-style-type: none"> Proposed infrastructure at the park could be used for Inuit Owned commercial enterprises. NP&SP will develop, manage, and operate the park as per IIBA Articles 4 & 5 to provide opportunities for Inuit-owned businesses. Promote Inuit Tourism operators to visitors. Complete and implement an Inuit Tourism Strategy for Rankin Inlet to maximize economic opportunities associated with the park.

2.5 EXISTING CONDITIONS OF HERITAGE APPRECIATION AT IQALUGAARJUUP NUNANGA

This section provides a brief summary of the existing conditions of Iqalugaarjuup Nunanga's Heritage Appreciation Program. It is important to understand the current conditions so that we can establish a starting point for the programs, materials and infrastructure that will be recommended as future actions to meet the park's goals and objectives for heritage appreciation.

The following table lists the existing heritage appreciation components that have been developed for Iqalugaarjuup Nunanga and indicates whether each of the components meets the goals, objectives and requirements for the park's Heritage Appreciation Program.

Table 2: Status of existing heritage appreciation components at Iqalugaarjuup Nunanga in relation to the park's goals, objectives, and requirements.

Existing Component	Conforms	Requires Update
Signage and Displays		✓
Brochures – Map		✓
Brochure - Booklet		✓
Website		✓
Community/Cultural Events	✓	
Youth Career Development		✓
In-park Educational Programming		✓
Park Image and Video Collection		✓
Communications		✓

The components that currently conform to the needs and requirements of the park's Heritage Appreciation Program are summarized below, while those that require an update will be addressed later in Section 4.

2.5.1 COMMUNITY/CULTURAL EVENTS

Parks Day is an annual event that NP&SP is already implementing in several parks to coincide with *Canada's Parks Day* (a Canadian Park's Council initiative). A Parks Day event (BBQ and games) is held annually in Rankin Inlet at the Pavilion (Elder's Cabin).

Parks Day offers an opportunity to bring awareness of the park to residents of Rankin Inlet, and an opportunity to offer educational programming that emphasizes the park's cultural significance through the theme "The land around the river of little fishes". Through these activities, the park's goal and objectives for sharing heritage appreciation can be realized, and the park's IIBA requirement to host an annual community/cultural event is also achieved.

In the future, it will be important for NP&SP to ensure that the heritage appreciation programming planned and delivered at Iqalugaarjuup Nunanga's Parks Day is designed to meet the IIBA's requirements for cultural events. To guide the successful planning of this event, Section 5 presents specific actions that NP&SP can take. An annual Parks Day event should also be linked to the Rankin Inlet Inuit Tourism Strategy, which is discussed later in section 5.4.2.







3 ESSENTIALS OF HERITAGE APPRECIATION AT IQALUGAARJUUP NUNANGA

This section presents the knowledge and considerations that will guide and inform Iqalugaarjuup Nunanga's Heritage Appreciation Program, such as the interpretive themes, audience, and key messages that should be promoted and considered in the park's heritage appreciation components. It also presents the planning methodology that was used to create this Heritage Appreciation Plan for Iqalugaarjuup Nunanga.

3.1 THEMES

In heritage appreciation and interpretive planning, the *theme* is the main message and presents the viewpoint of the story. Themes are used to define the core content of educational messages that the park offers, and are the building blocks on which park's interpretive services and educational programs are based.

The Iqalugaarjuup Nunanga Master Plan recommends that the heritage appreciation plan should celebrate the theme "The Land Around the River of Little Fishes", which is the direct translation of the park's name. The "little fishes" refer to the Arctic grayling that frequent this part of the Meliadine River watershed.

The "Land Around the River of Little Fishes" theme will be developed through the following sub-themes identified in the park Master Plan, and supported by new data that will be collected through special projects in the future. These sub-themes include:

- Abundant Connections: Land, Wildlife, Plants, and the Seasons
- Of Ice and Rivers and Shores
- Qamaviniqtaalik
- Our People - Our Origins
- Legends

The following table offers a variety of interpretive topics that can be explored and shared under the four subthemes listed above. Information supporting these subthemes can be found in the 2019 Complete Inventory of Park Resources.

The "Ijiralik" Legend

Two prominent legends relate to Inugarullik and Ijiraq. These legends are associated with several of the places in the park that have traditional names.

As told by Mary Ann Taparti in 2003, "there are "little people" (singular inugarullik; plural: inugarulliit), who are about 45 cm (18 in.) tall and seem to live a traditional lifestyle. They dress in traditional clothing and hunt with traditional weapons. They do not live in modern houses, but seem to live where there are lots of rocks and cavities. People remark on having seen hare skins staked out and drying, and feel that these are places where the little people have been preparing skins for clothing. Locally, most sightings of the little people seem to have been near the Meliadine River (such as at Ijiralik and Qamaviniqtaalik)."

"Ijiraq is translated as "hider" or "shadow" or sometimes "partly human/partly spirit" explained Mary Ann Taparti in 2003. Ijirait (singular: Ijiraq) seem to be capable of changing their shapes or of being invisible. When they are in human form, they seem to be of normal size. They can be shadowy, at the edges of consciousness and barely seen.

Some speak of seeing a being like a wolf, with large paws, but walking upright. Others mention huge eyes, long nails and long hair, human-like beings."

Table 3: Planning Matrix for Suggested Interpretive Themes

<i>Subthemes</i>	<i>Subtheme Description from the Master Plan</i>	<i>Suggested Topics for Interpretation</i>
<i>Abundant Connections: Land, Wildlife, Plants, and the Seasons</i>	<p>This sub-theme will develop the interpretive messages and stories associated with the seasonal calendar for the park. The theme offers opportunities to connect historical and contemporary use of the park's resources. The theme will expand understanding of the park as a "living, cultural landscape" throughout the year.</p> <p>The park's setting is defined by an esker ridge that runs in a north-south direction and the Meliadine River valley. The park provides important habitat for migratory mammals, birds, raptors and fish. An important annual event is the migration of the caribou herd in auyuk (summer). The park also supports a nationally significant Peregrine Falcon population with feeding habitat and a nesting site.</p> <p>These epic cycles of migration have always influenced the use of the area by Inuit and their ancestors, demonstrating the powerful connection of the land and Inuit culture.</p>	<p>Specific themes of interest to enhance the existing interpretive messages include:</p> <ul style="list-style-type: none"> • Seasonal calendar of the park • Caribou Migration • Birds, raptors, avian research, and bird watching • Harvesting and important wildlife areas • Hunting and fishing patterns and techniques
<i>Of Ice and Rivers and Shores</i>	<p>This sub-theme will build upon the scientific knowledge of the park's glacial and geological formation. In addition to the stories already shared under this theme, information on recent changes in the landscape as a result of climatic conditions can be explored. Traditional knowledge and cultural perspectives can be added to illuminate the impacts of the park's important environmental features: the river, the esker, and tundra.</p>	<p>Specific themes of interest to enhance the existing interpretive messages include:</p> <ul style="list-style-type: none"> • Geomorphology of the park • Climate change in the park
<i>Qamaviniqtaalik</i>	<p>The Qamaviniqtaalik sub-theme is an opportunity to provide all park user groups with an understanding of Thule and Caribou Inuit cultures. Interpretation and education of the history, archaeological features, and cultural practices can be shared through the print materials, signage, "Learn to" programs, and educational programs</p> <p>Qamaviniqtaalik is a site of territorial significance set on a hillside above the river. Qamaviniqtaalik contains features from several cultures, from late Thule to historic Caribou Inuit. The legends and stories from Qamaviniqtaalik continue to be shared; connecting people to the past.</p>	<p>Specific themes of interest to enhance the existing interpretive messages include:</p> <ul style="list-style-type: none"> • Subterranean houses – how they were built and used • Sod House Reconstruction Project

<i>Subthemes</i>	<i>Subtheme Description from the Master Plan</i>	<i>Suggested Topics for Interpretation</i>
<i>Our People - Our Origins</i>	Associated with the Qamaviniqtaalik sub-theme, information on all of the past cultures that occupied this region and the connection to the current population of Rankin Inlet and the Kivalliq Region can be explained and illustrated through this sub-theme. Theories about past cultures, such as their land use practices, technologies, and belief systems can be presented, with links to the “Abundant Connections” sub-theme. The impact of climate change on these cultures can be linked to the “Of ice and rivers and shores” sub-theme	<p>Natural History of the park as an evolving landscape:</p> <ul style="list-style-type: none"> • Geology • Climate and Glaciation • Vegetation • Birds and other Wildlife • Legends related to formation of landscape features • Vantage Points for Hunting • Travel routes and traditional Inuit Place Names associated with the areas of the park
<i>Legends</i>	The sub-theme will share the legends and stories associated with the park. The sub-theme offers opportunities to expand the interpretive program to include storytelling sessions in the park, at the visitor centre, and online.	<p>Legends:</p> <ul style="list-style-type: none"> • Inugarulik (little people) • Ijiraq (shadow, hider, or partly human/partly spirit people)



3.2 AUDIENCES

Developing and implementing the Iqalugaarjuup Nunanga HAP requires an understanding of “who” will benefit from the key messages, materials, and tools being proposed about and for the park. These people are referred to as the audience for the HAP, and each group’s needs must be considered for the benefits to be realized.

Since the HAP will be developed and implemented over several years as financial and human resources permit, this Plan has identified the primary audience, or those groups that will benefit directly from the heritage appreciation program components, and the secondary audience as those who will receive benefits indirectly from the proposed actions. There are two primary audiences for Natural Environment Recreation Parks: Residents and Visitors. The Ovayok Master Plan also identifies ‘Researchers’ as a third primary audience. These three audiences (also called park user groups) are further described in the Master Plan (Section 2.3.4) and Inventory (Section 2.4).

The primary audience for an Outdoor Recreation Park, as recommended in the Iqalugaarjuup Nunanga Master Plan, are the residents of Rankin Inlet. The Iqalugaarjuup Nunanga Master Plan also identifies tourists, researchers, film crews and industries as other primary audiences. These five audiences (also called park user groups) are further described in the Master Plan (Section 2.2.4), Management Plan (Section 2.3.9) and Inventory (Section 2.3).

The development and implementation of the Iqalugaarjuup Nunanga HAP will result in resources that may also indirectly benefit the additional following groups:

- Business travelers that travel to and from, or are passing through Rankin Inlet;
- Media (newspaper, magazine, etc.) that may publish features on the park or the community;
- Online Visitors that can access resources about the park on the NP&SP website; and
- Schools outside of Rankin Inlet that can access online resources about the park.

Primary Audiences for Iqalugaarjuup Nunanga HAP

- Residents
- Tourists
- Industry
- Researchers
- Film Crews

The following table (Table 4) presents the specific audience groups that will benefit directly from the park’s heritage appreciation program. As the table demonstrates, there are several audience types that would be best served by the same types of materials, tools and key messages that are also required by other audiences. This overlap provides NP&SP with the opportunity to develop materials that are suitable for multiple audiences. A good example of this would be a park map brochure that could be distributed to both residents of Rankin Inlet and tourists coming from other places, or park interpretive training materials that could benefit both Inuit Tourism Operators and park staff.



Table 4: Iqalugaarjuup Nunanga HAP Audience Needs

CATEGORY	TARGET	PRIMARY OR SECONDARY	NEEDS	RECOMMENDED APPROACH
Rankin Inlet Schools	Students	Primary audience	<ul style="list-style-type: none">• Awareness of Kajjausarviit: Nunavut Parks Program• Understand the natural environment of the park, cultural significance of the park, and park regulations• Stewardship and respect for parks, specifically the impact of ATV use, vandalism, garbage	<ul style="list-style-type: none">• Communication Materials (e.g. newsletters, brochures, park map, presentations, social media)• Education and Youth Programs (e.g. Education Module-based information about the park for use in the classroom, In-park Camps, Outdoor Classroom)
	Teachers	Primary audience	<ul style="list-style-type: none">• Teaching modules• On-line information or resources for projects, homework or assignments	<ul style="list-style-type: none">• Education and Youth Programs (e.g. Design and development of Teacher Resource Kits that include module-based information about the park for use in the classroom)
Residents of Rankin Inlet	Inuit and non-Inuit residents using the park and surrounding area	Primary audience	<ul style="list-style-type: none">• Awareness of Inuit rights in Nunavut Parks as defined by the NA and IIBA• Use, access and enjoyment; harvesting; removal of carving stone; outpost camps; cabins; Inuit owned lands• Awareness of Kajjausarviit: Nunavut Parks Program• Understand the natural environment of the park, cultural significance of the park, and park regulations• Stewardship and respect for parks, specifically the impact of ATV use, vandalism, garbage• Park related Inuit business and career opportunities• Public safety notices	<ul style="list-style-type: none">• Interpretation tools (e.g. signs, displays)• Community/Cultural Events – in coordination with Inuit Tourism Strategy• Education and Youth Programs (e.g. Learn-to Program, In-park camps, outdoor classroom activities)• Communication Materials (e.g. newsletters, brochures, park map, presentations, radio shows, social media)
	Residents that are not using the Park	Primary audience	<ul style="list-style-type: none">• Awareness of Kajjausarviit: Nunavut Parks Program• Awareness of the services and activities to encourage use of parks• Increased accessibility for residents to visit the park	<ul style="list-style-type: none">• Communication tools (e.g. newsletters, social media, park map, radio shows)
	Youth	Primary audience	<ul style="list-style-type: none">• Awareness of Kajjausarviit: Nunavut Parks Program• Park related career opportunities	<ul style="list-style-type: none">• Education and Youth Programs (e.g. Rankin Inlet “Careers in Parks” package, presentations, NP&SP participation in Job Fairs)

CATEGORY	TARGET	PRIMARY OR SECONDARY	NEEDS	RECOMMENDED APPROACH
Visitors/Tourists	Tourists, Business Travelers, or potential future visitors	Primary audience	<ul style="list-style-type: none"> Awareness of Inuit rights in Nunavut Parks as defined by the NA and IIBA Use, access and enjoyment; awareness of: harvesting, removal of carving stone, outpost camps, cabins and Inuit owned lands Permit requirements (where applicable) or regulated/prohibited access areas or activities (where applicable) Awareness of Kajjausarviit: Nunavut Parks Program Understand the natural environment of the park, cultural significance of the park, and park regulations Stewardship and respect for parks Inuit tourism businesses and tourism opportunities related to the park Community specific cultural events and activities that are supported by NP&SP Public safety notices 	<ul style="list-style-type: none"> Interpretation tools (e.g. signs, brochures, in-park programs) Community/Cultural Events – in coordination with Inuit Tourism Strategy Education and Youth Programs (e.g. Learn-to Program) Communication Materials (e.g. online resources, brochure, park map)
	Researchers Nunavut Research Institute Other Researchers	Secondary audience	<ul style="list-style-type: none"> Awareness of Inuit rights in Nunavut Parks as defined by the NA and IIBA Use, access and enjoyment; awareness of: harvesting, removal of carving stone, outpost camp; cabins and Inuit owned lands Research permit requirements (where applicable) or regulated/prohibited access areas or activities (where applicable) Public safety notices 	<ul style="list-style-type: none"> Communication Materials (e.g. online resources, newsletters, posters, presentations, park map) Outdoor Labs, lectures Research partnership opportunities
	Film Crew	Secondary Audience	<ul style="list-style-type: none"> Awareness of Inuit rights in Nunavut Parks as defined by the NA and IIBA Use, access, and enjoyment; awareness of: harvesting, removal of carving stone, outpost camps, cabins, and Inuit owned lands Permit requirements (where applicable) or regulated/prohibited access areas or activities (where applicable) Awareness of Kajjausarviit: Nunavut Parks Program Understanding of the natural environment of the park, cultural significance of the park, and park regulations Public safety notices 	<ul style="list-style-type: none"> Interpretation tools (e.g. signs, displays) Communication materials (e.g. online resources, newsletters, posters, presentations, park map) Partnership opportunities
Industry	Mine Industry	Secondary Audience	<ul style="list-style-type: none"> Awareness of Inuit rights in Nunavut Parks as defined by the NA and IIBA Use, access and enjoyment; awareness of: harvesting, removal of carving stone, outpost camp, cabins and Inuit owned lands Public safety notices 	<ul style="list-style-type: none"> Communication Materials (e.g. online resources, newsletters, posters, presentations, park map) Potential partnerships

CATEGORY	TARGET	PRIMARY OR SECONDARY	NEEDS	RECOMMENDED APPROACH
Business	Inuit businesses <ul style="list-style-type: none"> Tourism providers (hotels, restaurants, outfitters, guides, etc.) 	Secondary audience	<ul style="list-style-type: none"> Awareness of Inuit rights in Nunavut Parks as defined by the NA and IIBA Use, access and enjoyment; awareness of: harvesting, removal of carving stone, outpost camps, cabins and Inuit owned lands Awareness of the TPA Permit requirements (where applicable) or regulated/prohibited access areas or activities (where applicable) Public safety notices Awareness of Inuit business opportunities in Nunavut Parks as defined by the NA and IIBA (where applicable) Information on visitor groups using the park and the services they require/request Inuit Tourism Strategy Cultural events and activities with tourism potential that are supported by NP&SP 	<ul style="list-style-type: none"> Community/Cultural Events – in coordination with Inuit Tourism Strategy Educational Programs (e.g. Park interpretive script and training - in coordination with the Inuit Tourism Strategy) Communication Materials (e.g. newsletters, posters, presentations, promotional materials in coordination with the Inuit Tourism Strategy)
Park Management Partners	CJPMC	Advisory Group	<ul style="list-style-type: none"> Awareness of the NA, IIBA and TPA Awareness of Kajjausarviit: Nunavut Parks Program Awareness of park-specific planning and programs, including the inventory of cultural resources, master plan, management plan, and Inuit Tourism Strategies 	<ul style="list-style-type: none"> Communication Materials (e.g. newsletters, presentations)
	Kivalliq Inuit Association	Advisory Group	<ul style="list-style-type: none"> Awareness of Kajjausarviit: Nunavut Parks Program Awareness of park-specific planning and programs, including the inventory of cultural resources, master plan, management plan, and Inuit Tourism Strategies 	<ul style="list-style-type: none"> Communication Materials (e.g. newsletters, presentations)

CATEGORY	TARGET	PRIMARY OR SECONDARY	NEEDS	RECOMMENDED APPROACH
Government	Government of Nunavut Departments working directly with the NP&SP Division <ul style="list-style-type: none"> Department of Environment Parks and Special Places Staff Regional Offices Wildlife Division, Area Office Staff – Wildlife Officers, Wildlife Researchers Department of Education Department of Culture and Heritage Nunavut Arctic College ED&T 	Primary audience	<ul style="list-style-type: none"> Awareness of Inuit rights in Nunavut Parks as defined by the NA and IIBA Use, access and enjoyment; awareness of: harvesting, removal of carving stone, outpost camps, cabins and Inuit owned lands Awareness of the TPA Awareness of Kajauesarvut: Nunavut Parks Program Awareness of park-specific planning and programs, including the inventory of cultural resources, master plan, management plan, and Inuit Tourism Strategies Increase understanding and awareness of natural and cultural resources, heritage and history in all parks Partnerships to manage the parks natural and cultural resources Partnerships to monitor and enforce regulations governing the parks natural and cultural resources Public safety notices Awareness of Inuit Tourism Strategies and information on opportunities to promote tourism opportunities associated with parks, including cultural events and activities 	<ul style="list-style-type: none"> Education and Youth Programs (e.g. Park interpretive script and training) Communication Materials (e.g. newsletters, brochure) at hotels
	Municipality of Rankin Inlet	Secondary audience	<ul style="list-style-type: none"> Awareness of the NA, IIBA and TPA Awareness of Kajauesarvut: Nunavut Parks Program Awareness of Iqalugaarjuup Nunanga development and management plans, including the master and management plans, management zones Awareness of Inuit Tourism Strategies Partnerships for park Interpretative programs (e.g. signs, in-park programs, heritage centre display, promotion of cultural events, promotional materials) 	<ul style="list-style-type: none"> Communication Materials (e.g. newsletters, presentations)

CATEGORY	TARGET	PRIMARY OR SECONDARY	NEEDS	RECOMMENDED APPROACH
Non-government	Kangiqliniq Hunters and Trappers Organization	Secondary audience	<ul style="list-style-type: none"> Awareness of Inuit rights in Nunavut Parks as defined by the NA and IIBA Use, access and enjoyment; awareness of: harvesting, removal of carving stone, outpost camps, cabins and Inuit owned lands Awareness of the NA, IIBA and TPA Awareness of Kajjausarviit: Nunavut Parks Program Awareness of Inuit harvesting rights in Nunavut Parks as defined by the NA and IIBA Respect for sustainable use of the park, specifically the impact of ATV use Avoid conflicts between harvesting activities by increasing awareness of the recreational and tourism programs that may occur in the park Awareness of Iqalugaarjuup Nunanga development and management plans, including the master plan, management plan, and management zones 	<ul style="list-style-type: none"> Communication Materials (e.g. newsletters, posters, presentations)
	Kangiqliniq Hunters and Trappers Organization	Secondary audience	<ul style="list-style-type: none"> Awareness of Inuit rights in Nunavut Parks as defined by the NA and IIBA Use, access and enjoyment; awareness of: harvesting, removal of carving stone, outpost camps, cabins and Inuit owned lands Awareness of the NA, IIBA and TPA Awareness of Kajjausarviit: Nunavut Parks Program Awareness of Inuit harvesting rights in Nunavut Parks as defined by the NA and IIBA Respect for sustainable use of the park, specifically the impact of ATV use Avoid conflicts between harvesting activities by increasing awareness of the recreational and tourism programs that may occur in the park 	<ul style="list-style-type: none"> Communication Materials (e.g. newsletters, posters, presentations)



3.3 KEY MESSAGES

At the park-specific level, interpretative programs share information on park heritage, including broader Kijjausarviit: Nunavut Parks Program key messages. These key messages include both factual information about the nature, purpose and regulations relating to heritage appreciation, and values or principle-based messaging. Special attention must be given to maintain consistency and level of detail in messaging. Messages must also be geared to meet the needs of the specific audiences for whom they are intended. The key messages approved for use in the NP&SP Heritage Appreciation Program are detailed in Appendix 5 of the HA Framework.

Information and content contained in the previous plans and reports prepared for Iqalugaarjuup Nunanga have informed the key messages for this HAP, including information that will increase awareness of Nunavut Parks, Iqalugaarjuup Nunanga, and the park’s theme “The Land Around the River of Little fishes” for each audience group.

The following table identifies the key messages and the audience(s) that would benefit from the various message content.

Table 5. Key Messages for Iqalugaarjuup Nunanga HAP Audiences

CATEGORY	TARGET	AUDIENCE	APPLICABLE KEY MESSAGES												
			General NP&SP Program role and purpose statement	NP&SP contact or link for more info	Inuit-Owned Land regulations	Safe and sustainable travel message (e.g. Travel in Bear Country)	Respect Inuit rights to use and enjoyment message	General regulations (e.g. archaeological resources)*	Park-specific regulations (e.g. travel route or access restrictions)*	Park boundary map*	Regional context map	Emergency contact info	Park-related career info	Inuit tourism promotion	Travel planning advice
Rankin Inlet Schools	Students (specifically grades 4, 7, 10 and 11) and Teachers	Primary	✓	✓		✓	✓	✓	✓	✓	✓	✓	✓		
Residents of Rankin Inlet	Residents (Inuit and non-Inuit) using the park and surrounding area	Primary	✓	✓	✓	✓	✓	✓	✓	✓	✓	✓	✓	✓	
	Residents not using the Park	Primary	✓	✓			✓			✓	✓			✓	
	Youth	Primary	✓	✓			✓						✓		
Visitors	Tourists, Business Travelers, or potential future visitors	Primary	✓	✓	✓	✓	✓	✓	✓	✓	✓	✓		✓	✓
	Researchers	Secondary	✓	✓	✓	✓	✓	✓	✓	✓		✓			✓
Industry	Film Crew	Secondary	✓	✓		✓	✓	✓	✓		✓			✓	✓
Business	Mining Company	Secondary		✓	✓		✓			✓	✓	✓			
Park Management Partners	Inuit Tourism providers	Secondary	✓	✓	✓	✓	✓	✓	✓	✓	✓	✓		✓	✓
	CJPMC or NJPMC	Advisory Group	✓	✓	✓			✓							
Government	Kivalliq Inuit Association	Advisory Group	✓	✓	✓			✓							
	GN Departments working directly with the NP&SP Division	Primary	✓	✓	✓	✓	✓	✓	✓	✓	✓	✓			
Non-government	Hunters and Trappers Organization	Secondary	✓	✓	✓		✓	✓	✓	✓	✓	✓			
	IHT	Secondary	✓	✓			✓	✓							

3.4 HERITAGE APPRECIATION PLANNING METHODOLOGY

3.4.1 IQALUGAARJUUP NUNANGA TERRITORIAL PARK DRAFT HERITAGE APPRECIATION PLAN (2022-2032)

The Iqalugaarjuup Nunanga Territorial Park Draft Heritage Appreciation Plan (2022-2032) was prepared to meet the requirements of the NA and IIBA. The Nunavut Parks Framework for Heritage Appreciation/Interpretive Planning and Heritage Appreciation Strategy were used to guide the content of the Heritage Appreciation Plan.

In 2018-2019 the park's original master and management plans were updated by NVision Insight Group under guidance of the Rankin Inlet CJPMC. Combined, these two documents identify the heritage appreciation elements that are recommended at Iqalugaarjuup Nunanga. The following table identifies the reports that informed the content of the Heritage Appreciation Plan.

Table 6. Key documents that have informed Iqalugaarjuup Nunanga's Heritage Appreciation Plan

YEAR	TITLE	AUTHORS	PURPOSE
1991	1991 Meliadine River Park Master Plan	Avens Associates	Master Plan
2019	Iqalugaarjuup Nunanga Territorial Park Complete Inventory of Park Resources	CJPMC/NVision Insight Group	Updated Inventory of Park Resources
2019	Iqalugaarjuup Nunanga Territorial Park Master Plan	CJPMC/NVision Insight Group	Updated Master Plan
2019	Iqalugaarjuup Nunanga Territorial Park Management Plan	CJPMC/NVision Insight Group	Updated Management Plan

As an existing park with interpretive elements and programs, the development of Iqalugaarjuup Nunanga's current interpretive materials preceded the standard methodology outlined in the HA Framework (Section 3.3.1) and therefore require revisions. The 2019 Master Plan served as a starting point for NP&SP and the CJPMC to determine what specific additional content is needed or required to complete the Heritage Appreciation Program for Iqalugaarjuup Nunanga. The Master Plan also outlined several recommendations to update and expand on existing elements that were developed in previous years.

This Iqalugaarjuup Nunanga Territorial Park Heritage Appreciation Plan has been developed to meet all statutory requirements, the park-specific requirements in the HA Framework, the strategic goals and objectives in the 2016-21 HA Strategy; and to address changes that have occurred in the park's physical environment, state of park resources, park usage, and community vision for the future of the park.

The Heritage Appreciation Plan for Iqalugaarjuup Nunanga has been developed under the guidance of the Rankin Inlet CJPMC. All future work related to Iqalugaarjuup Nunanga's Heritage Appreciation Program should adhere to the consultation techniques that will be discussed later in Section 5.







4 IQALUGAARJUUP NUNANGA HERITAGE APPRECIATION STRATEGY

The strategic approach used to prepare the Iqalugaarjuup Nunanga Heritage Appreciation Plan is based on the park's goals, visions and statutory requirements for heritage appreciation, as set out by the park's master plan, management plan, HA Framework, and 2016-21 HA Strategy. This section describes the additional programs and materials that are required or recommended to facilitate park visitor and community member experiences, or to complete the content requirements for Iqalugaarjuup Nunanga's Heritage Appreciation Program, and describes how these components will achieve the purpose and desired outcomes of heritage appreciation for the park.

Elders will be engaged throughout the consultation process and be invited to participate in heritage appreciation initiatives. This is particularly important for programs that involve youth, such as Learn-to activities, oral history projects, in-park education programs, and school visits. The leadership of elders will ensure the intergenerational transfer of Inuit Qaujimagatuqangit and provide support to all park audiences in connecting with the culture and heritage of Iqalugaarjuup Nunanga.

The following list includes the programs and actions that are proposed for the Iqalugaarjuup Nunanga Heritage Appreciation Program, and will be detailed and discussed in this section:

- *Signage and Displays (Section 4.1)*
- *Promotional and Informational Materials (Section 4.2)*
- *Public Communications (Section 4.3)*
- *Community/Cultural Events (Section 4.4)*
- *Park-Specific Education Programs (Section 4.5)*
- *Special Projects (Section 4.6)*
- *Interpretive Training Tools (Section 4.7)*
- *Annual Student Award (Section 4.8)*
- *Updates to the Park's Image and Video Collection (Section 4.9)*

4.1 SIGNAGE AND DISPLAYS

Signage and displays provide park information, regulations, and interpretation to support the goals and vision of the park.

The Master Plan recommends that the existing signage program be expanded in the future to enhance the park theme through interpretive message, and to provide additional orientation (maps), regulatory (e.g. Nunavut Archaeological and Paleontological Resources Act and Regulations, and visitor guidance on how to behave when viewing archaeological sites), and public safety messages (e.g. Emergency Procedures and Contact, Travel in Bear Country; Safe and Sustainable Travel).

The Master Plan has identified a multi-year project for the design, fabrication and installation of signage elements.

4.1.1 EXISTING SIGNAGE FOR IQALUGAARJUUP NUNANGA

The 2019 Master Plan identified the existing interpretive signage in the park, which includes entry signage, interpretive panels and directional signage. These existing sign elements, developed in 2004-2005, provide valuable interpretive information. These signs were well maintained as of 2019 but may need replacement in the future (as required) due to weathering, vandalism or decay.



Table 7: Existing Signage at Iqalugaarjuup Nunanga Territorial Park

LOCATION (as per master plan)	SIGN TYPE	THEME / CONTENT	MAPS/PHOTOS/ ILLUSTRATIONS	CONDITION NOTES (2019)
Park Entrance Sign	Large entrance structure	Park name and Nunavut Parks logo		Well maintained
Park Welcome Kiosk (located on the side of the road near the park entrance sign)	Kiosk (three panels)	<p>Panel A: <i>Iqalugaarjuup Nunanga</i></p> <p><i>The land for this territorial park was set aside to preserve an important natural area close to Rankin Inlet. The name means “land around the river of little fishes”, and refers to Iqalugaarjuk (Meliadine River), which is in the valley to the north.</i></p> <p><i>This area has been home to Thule and Caribou Inuit since about 1200 AD, and their descendants continue to use the land today. In the park, you will find the remnants of old camps, including tent rings, small hearths, storage caches, hunting blinds, fox traps, and more*.</i></p> <p><i>*Please do not rearrange these structures, and do not build fires in them. It is against Federal and Territorial law to disturb any archaeological site. Leave everything in place so others can enjoy these sites as well.</i></p>	<p>Illustrations: tent ring, storage cache, kayak cradle, drying rack.</p> <p>Photos: tent ring, tower fox trap, small hearth</p>	Well maintained
		<p>Panel B: <i>Map of Iqalugaarjuup Nunanga Territorial Park</i></p> <p><i>In the park, there are several picnic areas, outhouses, a shelter cabin, and several walking trails, one with numbered interpretive stops located at Qamaviniqtaalik.</i></p> <p><i>Please help take care of this park – please don’t litter; pack out what you pack in or use the waste bins. Take care where you build a fire; do not remove stones from a tent ring to make a fire pit.</i></p> <p><i>A printed guide is available at the Visitors’ Centre, hotel and other places in town. “Loaner copies” are in the cache box below.</i></p>	Map of park	
		<p>Panel C: <i>Wildlife Watching</i></p> <p><i>As you walk or drive on the park roads, watch for wildlife. You are likely to see arctic ground squirrels (siksiks), and often can see many birds, especially waterfowl, sandhill cranes, and raptors including peregrine falcons and rough-legged hawks. If you are lucky, you may see an arctic fox, arctic hare, or caribou.</i></p> <p><i>If you are in or on a vehicle when you see a bird or animal, you will see it better if you simply stay very still.</i></p> <p><i>Polar bears or grizzlies are rarely seen in the area, but are possible. Watch carefully for these and leave the area immediately if you see a bear.</i></p>	<p>Illustrations: ground squirrels (use both), lemmings, arctic fox, hare, caribou.</p> <p>Sandhill crane, tundra swan, ptarmigans, arctic tern.</p>	
Sandy Lake (located on the park road at the access to Sandy Lake)	Interpretive panel	<p><i>Of Ice and Rivers....</i></p> <p><i>You are standing on the crest of the Meliadine Esker.</i></p> <p><i>Eskers are deposits of sand and gravel left behind by huge meltwater rivers flowing from within the melting continental ice sheet that formed during the Laurentide Glaciation. This ice sheet covered most of Canada, and was likely almost 3 km thick here, near the centre of ice.</i></p> <p><i>The former river courses are now visible as long ridges winding across the land, a bit like “streambeds in reverse”. They are made up of cobbles, boulders, gravel, and sand.</i></p> <p><i>Esker systems often include ponds, which may have formed when stranded blocks of ice melted, revealing cavities in the deposits. This is Sandy Lake, a favourite picnic spot.</i></p>	<p>Illustrations: esker formation diagram</p> <p>Along one side of the sign: plants (boreal wormwood, mountain avens, prickly saxifrage, black bearberry, snow cinquefoil)</p>	Well maintained

LOCATION (as per master plan)	SIGN TYPE	THEME / CONTENT	MAPS/PHOTOS/ ILLUSTRATIONS	CONDITION NOTES (2019)
Qamaviniqtaalik Kiosk (located in the parking area above the archaeological site)	Kiosk (three panels)	Panel A: <i>Map of Qamaviniqtaalik Interpretive Trail</i>	Map of the site	Well maintained
		Panel B: <i>People of Qamaviniqtaalik</i> <i>Qamaviniqtaalik was occupied by the Thule people from about 1200-1775 AD, and then by historic (Caribou) Inuit until about the 1950s.</i> <i>The Thule originated in Alaska about 900 AD, and migrated east to Greenland and south into Hudson Bay during a warming period when bowhead whales occurred across the arctic.</i> <i>During the “Little Ice Age” (1550-1850 AD), the climate cooled, bowheads were no longer reliable prey, and the Thule changed their hunting to focus on seals, walrus, small whales, and caribou. By 1775, their culture had changed into what archaeologists now recognize as the Caribou Inuit culture.</i>	Illustrations: Drying rack, diagram of Thule origins. Photos: pulat-type fox trap, tent ring with elders, double tent ring	
		Panel C: <i>Life along Iqalugaarjuk (Meliadine River)</i> <i>This fine archaeological site was occupied from summer into winter. People hunted caribou and geese, fished at stone weirs in the river, and dried and stored the meat. In fall, they likely picked berries on the uplands.</i> <i>On the floodplain below, their story is told in the remains of five semi-subterranean autumn houses, more than ninety tent rings, and a variety of storage caches, drying racks, fox traps, kayak racks, and graves.</i> <i>People still come here to fish, hunt geese, pick berries, picnic, and get water from the river for tea.</i> <i>An interpretive trail circles the base of this hill. Numbers on stones along the trail indicate stations described in a printed trail guide, available at the Visitor’s Centre in Rankin Inlet. “Loaner” copies are in the cache box below.</i>	Illustrations: Fishing at stone weir, qarmat, tent ring, tent, pulat type fox trap, kayak cradle.	
Along road to Qamaviniqtaalik	Interpretive panel	<i>Peregrine Falcon Nesting Area</i> <i>Peregrine falcons nest on low cliffs across the river, and are usually present from June through August.</i> <i>Peregrines do not build a nest, but lay their reddish brown eggs on a ledge. The young hatch in mid-July, later than most raptors as their hatching is coordinated with the fledging of small tundra birds. The parents can catch these clumsy young birds easily, and are better able to feed their own chicks.</i> <i>Please watch only with binoculars, and do not approach any nest, as you may cause the birds to abandon it.</i>	Illustration: peregrine perching, peregrine in flight Photo: peregrine	Well maintained
Along Park road to Elders pavilion	Interpretive panel	<i>Loon Lakes</i> <i>Both red-throated and Pacific loons nest on the larger ponds along the esker. Adapted for swimming, loons cannot walk as their legs are set far back on their bodies. They build nests of matted vegetation along the shoreline, and “belly-flop” onto the nests.</i> <i>Snow and Canada geese migrate through here in large numbers in early September, feeding on berries on the hillsides. Sandhill cranes and tundra swans are also common in migration.</i> <i>The transitory pond north of the road holds water only in spring. As the soil thaws in summer, this pond drains. The long ponds in the valley to the north are old meanders of the river, called “oxbow lakes”, ideal waterfowl habitat.</i>	Illustrations: Pacific loon, red-throated loon, Plants: Moss campion, mountain avens, thrift, crowberry, bearberry.	Well maintained

LOCATION (as per master plan)	SIGN TYPE	THEME / CONTENT	MAPS/PHOTOS/ ILLUSTRATIONS	CONDITION NOTES (2019)
Elders pavilion area	Interpretive panel (end of road)	<p><i>Ancient Caribou Hunting Area</i></p> <p><i>This area was important for caribou and waterfowl hunting, and is rich in hunting hides, tent rings, meat caches, fox traps, and possibly several burial cairns*. A line of inuksuit extended along the peninsula and helped guide the caribou into killing zones where they could be hunted by bow and arrow from crescent-shaped hunting blinds called taluvit.</i></p> <p><i>Follow the crest of the esker to an inukshuk; down the slope to the left are fox traps, meat caches, and blinds. Tent rings with heavy stones set abutting each other are of probable Thule origin.</i></p> <p><i>*Please do not disturb any structure. Federal and Territorial laws protect all archaeological sites.</i></p>	<p>Illustrations: Caribou hunting diagram.</p> <p>Photos: tower fox trap, taluvit, tent ring at edge of lake</p>	<p>Monitor for wear</p> <p>Monitor for wear</p> <p>Elder Cabin sign is not on the new facility</p>
	Interpretive Panels (panel at pavilion; sign on the building)	<p>Panel A: <i>Esker profile</i></p> <p><i>From the top of the esker, you can look out to both sides and see a variety of plant communities. Varying conditions from wet, saturated soil to well-drained slopes, desert like esker crests, damp solifluction lobes</i></p> <p><i>Plant communities vary based on soil chemistry and conditions, amount of water available to plants, and exposure to wind and blowing ice crystals in winter.</i></p>	<p>Illustrations: esker; plant zones</p> <p>Photos: various plant species</p>	
		<p>Panel B: <i>Elders' Cabin [NOTE: sign not at new facility]</i></p> <p><i>This cabin is used as a meeting place, and a place for our elders to be on the land yet sheltered. Please help keep it clean, by collecting all your garbage and depositing it in the trash bins provided. Arrangement for meetings here may be made by calling the Department of Sustainable Development, 645-5067</i></p>		
Road Intersection	Icon post	<p>Directional - Simple post with icons and arrows:</p> <p>“Straight ahead” arrow:</p> <ul style="list-style-type: none"> Shelter Picnic area Outhouse Hiking trails <p>“Right” arrow:</p> <ul style="list-style-type: none"> Interpretive trail Cultural interest site Outhouse Picnic area 		Well Maintained

4.1.2 NEW SIGNAGE FRAMEWORK FOR IQALUGAARJUUP NUNANGA

Additional signage will address the recommendations for Heritage Appreciation in the Master Plan. This framework will bring the in-park signage into conformity with the guidelines for interpretive park signage by:

- Installing three (3) new kiosks to provide orientation, regulations, safety, and general park information.
- Applying the theme “The land around the river of little fishes” and the associated sub-themes: interpretive signage integrated into an outlook platform at Qamaviniqtaalik; one (1) new interpretive panel at Sandy Lake; and developing four (4) heritage education areas in the park to facilitate Heritage Appreciation program delivery and educational activities. New technology such as augmented reality and QR codes will be developed to improve the interpretive potential of signage and to create an interactive and accessible park visitor learning experience.
- Identifying Inuit Owned Land (IOL) as per the IIBA through boundary markers and updated park boundary mapping.
- Identifying the traditional place names associated with the areas of the park as per the IIBA on all maps and in the interpretive text.
- Improving visitor navigation by installing new directional marker posts be installed on the route between the community and the park (6 marker posts) and within the park (4 marker posts) using large font lettering, visible colours, icons, directional arrows, and kilometre distances.

Temporary signage will be required for barriers during road/trail construction.

This interpretive framework also recommends:

- Signage for the NP&SP office within Rankin Inlet, to identify the office location and provide visitor information.
- An interpretive panel about Iqalugaarjuup Nunanga Territorial Park to be installed at the Kivalliq Regional Visitors Centre, and a kiosk about the park to be located outside the visitor centre.
- An interpretive panel about Iqalugaarjuup Nunanga Territorial Park be developed the new Rankin Inlet airport.

The following section identifies the new signage framework for each location. It should be noted that this signage framework provides only a general outline for signage content, and that a revised storyline for panel content will need to be prepared with input from the CJPMC to ensure consistency with the park interpretive theme and key messages, clear trail marking and mapping, correct use of Inuktitut place names and trail names, and to ensure the regulatory messages are consistent.



4.1.3 GPS LOCATIONS FOR SIGNAGE INFRASTRUCTURE

Parks staff will be required to mark the GPS locations for trail posts, directional markers, boundary markers, interpretive panels and kiosks prior to issuing the RFP/RFQ for signage installation.

GPS markers will be provided to the successful contractor to guide in the correct location of each signage element. Parks staff will work with the contractor to confirm the locations during the installation process.

Table 8: New Signage Framework for Iqalugaarjuup Nunanga Territorial Park – Site 1

LOCATION (as per master plan)	SIGN TYPE	THEME / SUB-THEME	RECOMMENDED CONTENT
Site 1 Elder's Cabin Pavilion and Designated Camping Area	Kiosk (double-sided panels)	Information/Regulation	<ul style="list-style-type: none"> General information about the park site Park map Key messages: safe and sustainable use of park campground/bbqs/firepits Emergency contact information Park regulations
	Heritage Education area with integrated interpretive panels	<p>Theme – The land around the river of little fishes</p> <p>Subtheme – Abundant Connections: Land, Wildlife, Plants, and the Seasons</p> <ul style="list-style-type: none"> The seasonal calendar of the park should be the focus of the content at this location 	<ul style="list-style-type: none"> Interpretive content will expand on caribou migration, plant life and habitat content on the existing signs in the area. The integrated signage should be designed to have minimal visual impact in the surrounding landscape and should use symbols/ icons rather than text whenever possible.
	Pavilion sign	Information/Regulation	<ul style="list-style-type: none"> Contact numbers: Nunavut Parks and emergency services Building use regulations

Table 9: New Signage Framework for Iqalugaarjuup Nunanga Territorial Park – Site 2

LOCATION (as per master plan)	SIGN TYPE	THEME / SUB-THEME	RECOMMENDED CONTENT
Site 2 Sandy Lake	Public safety sign	n/a	<ul style="list-style-type: none"> Playground sign Emergency contact info Public advisory – water safety
	Temporary Barriers with signage to protect tundra	n/a	<ul style="list-style-type: none"> ATV Trail Closure to control ATV caused damage to the environment Info on regeneration of vegetation This action should be accompanied by a public communication and awareness notice to explain the purpose of the barriers and ask for public help to reduce ATV damage.

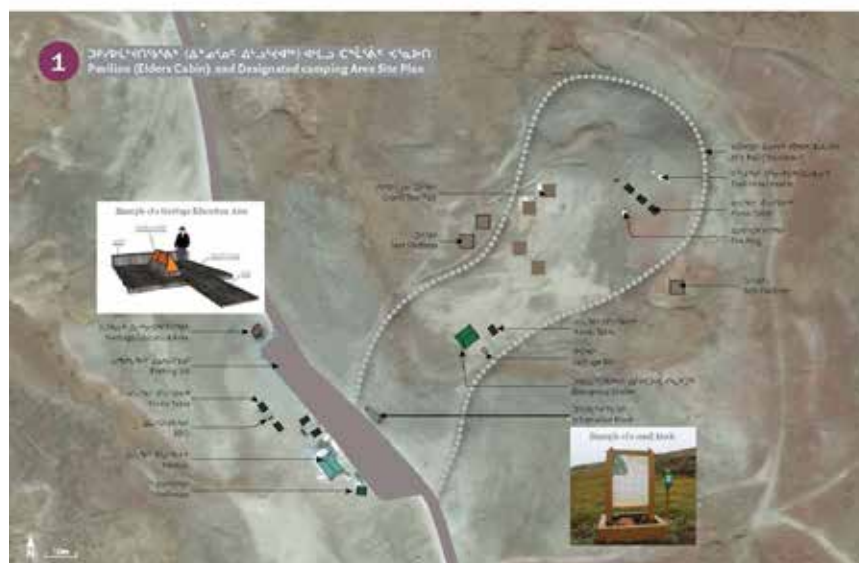


Table 10: New Signage Framework for Iqalugaarjuup Nunanga Territorial Park – Site 3

LOCATION (as per master plan)	SIGN TYPE	THEME / SUB-THEME	RECOMMENDED CONTENT
Site 3 Intersection Alignment	Temporary Barriers with integrated signage	n/a	<ul style="list-style-type: none">• Road closure• Regeneration of old road

Decommissioned Trail Sign



Table 11: New Signage Framework for Iqalugaarjuup Nunanga Territorial Park – Site 4

LOCATION (as per master plan)	SIGN TYPE	THEME / SUB-THEME	RECOMMENDED CONTENT
Site 4 Qamaviniqtaalik River Access and Bird Watching Site	Regulatory Sign	n/a	<ul style="list-style-type: none"> • Water Advisory message at Qamaviniqtaalik River Access
	Heritage Education area with integrated interpretive panels at Meliadine River Bird Watching Site	<p>Theme – The land around the river of little fishes</p> <p>Subtheme – Abundant Connections: Land, Wildlife, Plants, and the Seasons</p> <ul style="list-style-type: none"> • Bird/peregrine important wildlife areas should be the focus of the content at this location 	<ul style="list-style-type: none"> • Interpretive messages about migratory birds, raptors, habitat, avian research, and bird watching • Peregrine Falcon population with feeding habitat, nesting site etc. • Share information on the birds that are commonly seen in the park; explain their migratory and life cycle as it relates to their time stopping in the park – encourage sustainable bird watching

Inset site plan



Table 12: New Signage Framework for Iqalugaarjuup Nunanga Territorial Park – Site 5 & 6

LOCATION (as per master plan)	SIGN TYPE	THEME / SUB-THEME	RECOMMENDED CONTENT
Site 5 & 6 Qamaviniqtaalik	Kiosk	Information/Regulation – Qamaviniqtaalik is the focus of key messages	<ul style="list-style-type: none"> • General information and map of Qamaviniqtaalik • Description of site services • Key messages: minimal impact travel • Regulations: protecting archaeological resources
	Viewing platform with two integrated interpretive signs	Theme – The land around the river of little fishes Subtheme – – Qamaviniqtaalik and Legends/Stories associated with the archaeological site should be the focus of the content at this location	<ul style="list-style-type: none"> • Description of the archaeological features and the oral history on the past use of the area • Tell the story to bring the place to life through quotes and memories – how it might have been when Inuit used this location in the past • understanding of Thule and Caribou Inuit cultures • Oral histories & legends • Qamaviniqtaalik Historic Site Augmented Reality: Develop an interpretive app using augmented reality technology for use along the trail through the historic site to provide images of key archaeological features, and audio/video stories to interpret the historic occupation of the site. Nunavut Parks will seek partners for the project.
	low level barrier with integrated signage	Information/Regulation	<ul style="list-style-type: none"> • Regulatory: protection of historic subterranean houses and archaeological resources
	Heritage Education area with integrated interpretive panels	Theme – The land around the river of little fishes Subtheme – – Qamaviniqtaalik <ul style="list-style-type: none"> • Stories and information associated with the sod house project 	<ul style="list-style-type: none"> • Cultural landscape: the park heritage appreciation sub-theme, “Qamaviniqtaalik” as it relates to the cultural significance of past and present use of the park • Specific themes of interest to enhance the existing interpretive messages include: <ul style="list-style-type: none"> 1. Subterranean houses – how they were built and used. 2. Sod House Reconstruction Project.
	Icon Post (1)	Direction	<ul style="list-style-type: none"> • At trail intersection: Services, Qamaviniqtaalik River Access/Bird Watching Site and Qamaviniqtaalik Historic Site

Table 13: New Signage Framework for Iqalugaarjuup Nunanga Territorial Park – Site 7

LOCATION (as per master plan)	SIGN TYPE	THEME / SUB-THEME	RECOMMENDED CONTENT
Site 7 Park Entry	Kiosk	The land around the river of little fishes	<ul style="list-style-type: none"> • Introduction to Iqalugaarjuup Nunanga Territorial Park, the heritage appreciation theme and significance of the park • Map of the park indicating IOL, park boundary, traditional names and legend of park services • Key messages regarding IOL; Identify the regulations for access to IOL • Description of services and activities • Key messages: safe and sustainable travel; minimal impact travel; travel in bear country • Regulations: Inuit rights in parks; protecting archaeological resources; camping; wildlife; ATV use; private cabins protocol; garbage; campfires • Contact information
	Heritage Education area with integrated interpretive panels	Theme – The land around the river of little fishes Subtheme – Our People - Our Origins	<ul style="list-style-type: none"> • Natural features of the park and the association of these to culture: the park heritage appreciation theme as it relates to the cultural significance of park resources • Natural Resources: Caribou Migration information/pictures

Inset site plans



Inset site plans

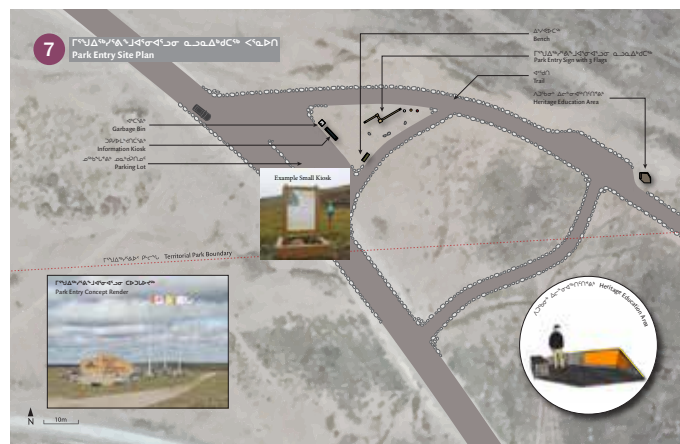


Table 14: New Signage Framework for Iqalugaarjuup Nunanga Territorial Park – Other Signage

LOCATION (as per master plan)	SIGN TYPE	THEME / SUB-THEME	RECOMMENDED CONTENT
Park Boundary and IOL Markers	Icon Posts (6 total): <ul style="list-style-type: none"> IOL (2) Trail boundary (4) 	Directional	<ul style="list-style-type: none"> Boundary markers where the park trails cross the boundary, and along the IOL/park boundary
Directional Markers in the Park	Icon posts (4)	Directional	<ul style="list-style-type: none"> Icon posts will be placed along park road to direct visitors to Qamaviniqtalik, Sandy Lake, and the Elder's Cabin Pavilion Posts will have large font lettering, icons, directional arrows, and kilometre distances
Additional directional signs in Rankin Inlet and on Access Road	Icon Posts (6)	Directional	<ul style="list-style-type: none"> Icon posts will be located in the community and along the road between Rankin Inlet and the park entrance These posts will replace the existing icon posts and will have large font lettering, icons, directional arrows, and kilometre distances for easier way finding from the community to the park
Kivalliq Regional Visitor Centre	Interpretive display (inside Visitor Centre) Kiosk (Outside the Visitor Centre)	The land around the river of little fishes	<ul style="list-style-type: none"> General Iqalugaarjuup Nunanga introduction including theme Contact information Park map and legend of services Summary description of the cultural and natural resources of the park for those that might want to visit or those unable to visit but interested in the place Key messages: how to travel to the park; hiring a guide; safe and sustainable travel Information materials at the visitor centre should also include: Park maps, brochures, and other print or digital materials and Inuit tourism operators' information
Rankin Inlet Nunavut Parks Office	Office sign	Information	<ul style="list-style-type: none"> Signage for the NP&SP office in Rankin Inlet to identify the office location and provide visitor information
Rankin Inlet Airport	Interpretive display/kiosk	The land around the river of little fishes	<ul style="list-style-type: none"> In the future additional displays and information kiosks may be developed for public buildings in Rankin Inlet, such as the airport

Decommissioned Trail Sign



IOL Boundary Marker



Park Boundary Marker Example from Qaumiik Territorial Park Master Plan



4.1.4 OTHER RECOMMENDATIONS RELATED TO SIGNAGE

The Heritage Appreciation Plan also recommends consideration of the following actions related to the park's interpretive signage; however, the specific implementation details and timelines are currently unknown.

- **Additional Community Signage and Displays**
The 2019 Master Plan suggests that there may be opportunities for the installation of additional signage and displays in other community locations, such as the airport. Opportunities for additional components should be explored during the planning phase for new signage to ensure consistency in production of materials and to take advantage of potential cost-savings that may result when ordering larger quantities of signs (i.e. producing a single sign or display may be more expensive than developing an extra unit as part of a larger project).
- **New Technology**
The Master Plan recommends enhancing the Heritage Appreciation program through mobile apps such as virtual reality/augmented reality and other online-based interpretive tools. As an option, QR codes added to park signage provide an opportunity for park users to access digital brochures, maps or other online supplementary information to learn more about the park's resources.

4.2 PROMOTIONAL AND INFORMATIONAL MATERIALS

The Iqalugaarjuup Nunanga Master Plan indicates that communication and marketing materials should be used to increase awareness of the traditional and contemporary use of Iqalugaarjuup Nunanga and share the story of the park through the theme “The Land Around the River of Little Fishes”. It should also provide key messages on park regulations, emergency procedures and contacts, minimal impact travel, sustainable use of the park, best harvesting practices, and promote the tourism opportunities for visitors to Rankin Inlet.

In keeping with the HAP Framework, promotional and informational materials for Iqalugaarjuup Nunanga should also share key messages about Nunavut Parks, and provide links/contacts for people who have an interest in learning more about the park. Finally, all marketing materials (brochures, trail maps, online information) should be developed in coordination with the objectives of the Rankin Inlet Inuit Tourism Strategy (Master Plan section 2.5).

The actions described below are recommended as additions and updates to the park's Heritage Appreciation Program. Successful completion of these key communication components will bring the park into conformity with the IIBA; advance the park's goal and objectives to share Inuit Qaujimagatuqangit, the unique story of Iqalugaarjuup Nunanga through the theme “The Land Around the River of Little Fishes”, and key messages that inform and encourage traditional and recreational use of the park with residents and visitors; and will support NP&SP's strategic goal to promote NP&SP and increase public awareness and appreciation of the opportunities provided by Nunavut Parks.



4.2.1 WEBSITE – YEAR 1-5

The NP&SP website (www.nunavutparks.com) provides general and park-specific web content for Iqalugaarjuup Nunanga, including basic information about the park's geography, wildlife, vegetation and history.

At present, the park-specific content for Iqalugaarjuup Nunanga on the NP&SP website does not meet the HA Framework requirements for key messages; nor does it adequately reflect the park as defined by the 2019 Master Plan. For example, the website does not reflect the park's theme "The Land Around the River of Little Fishes", or provide information on the cultural significance of the park or its resources from an Inuit perspective. The website would also benefit from the addition of an updated park-specific map that shows park boundaries and detailed area/location maps for places of special interest, traditional place names, Inuit



Owned Land, park access points and key coordinates, and emergency and other park facilities. It is therefore recommended that the park's webpage be updated to address these content deficiencies and messaging inconsistencies as soon as possible.

Secondly, in keeping with recommendations presented in the HA Strategy, the park's webpage should be enhanced with the following supplemental Information about the park:

- Digitized resources, organized as an online library/toolkit on NP&SP, Heritage appreciation, and specific park events, planning and management information, accessible to media and the general public;
- Community and park-specific online resources (i.e. archives of documents relating to the creation of specific parks and special places);
- Online calendar of events or programs related to heritage appreciation including education and youth programs by NP&SP and its partners;
- Educational resources for teachers, students and youth not in school;
- A comprehensive, indexed set of links to heritage-related organizations, departments, institutions and other relevant websites to link visitors to the resources they require to participate in heritage appreciation event and activities.

The addition of this material to the Iqalugaarjuup Nunanga webpage will help NP&SP promote the park to Nunavummiut and potential visitors, keep the local community informed of park-related events and opportunities, and support the Division's efforts to bring awareness of parks to Nunavut students and other youth not in school.

As a third recommendation for future consideration, several new communication tools could be added to the park webpage as they are developed. Although not a requirement for the park's Heritage Appreciation Program, these tools would enhance the available online resources for the park, and contribute to the park's objectives for heritage appreciation. These tools include:

White Papers - White papers are a government or other authoritative report giving information on an issue or topic of interest. It is recommended that NP&SP staff with knowledge of the park prepare white papers on the key issues and heritage appreciation themes for the park. These white papers could be developed over several years, and used in conjunction with other public communications activities, such as public presentations.

Video content, such as a short park YouTube movie that combines images from the park, the Elder interviews, and possibly other interviews conducted in the park.

Online educational materials developed by NP&SP and its partners.

Some of this content can be completed in-house by NP&SP as capacity permits (e.g. white papers), while the other components simply involve providing online access to materials that NP&SP already has available or will be developing through heritage appreciation-related projects planned for future years.

4.2.2 PARK BROCHURE BOOKLET – YEAR 1-5

As an Outdoor Recreation Park, Iqalugaarjuup Nunanga is required to have a *Park Brochure Booklet*. NP&SP has an existing brochure booklet for use at Iqalugaarjuup Nunanga that was developed in 2004 and later updated in 2014; however, similar to the park's existing signage, the brochure booklet does not adequately reflect the Iqalugaarjuup Nunanga 2019 Master Plan or all of the HAP Framework requirements (e.g. key messages, updated maps).

Recognizing that the existing brochure booklet currently provides valuable interpretive information and relevant content for the park, the Master Plan recommends that the information be updated and revised in coordination with the objectives of the Heritage Appreciation Plan and the Rankin Inlet Inuit Tourism Strategy. These updates must reflect the Iqalugaarjuup Nunanga 2019 Master Plan and meet all of the HAP Framework requirements (e.g. key messages, updated maps), including a focus on the park's interpretive theme, and other proper messaging that enhance the education and interpretive messages about the park. Brochure updates should also be designed and coordinated along with the new signage, to be developed through the framework proposed above, so that mapping and messaging are consistent and complimentary.

This revised brochure will use the existing format (NP&SP standard booklet brochure template as described by the HAP Framework in Section 4.2.3), be geared toward residents and visitors, and contain the following content as outlined in the HAP Framework:

- Interpretive messages highlighting Inuit culture and heritage; sites of cultural significance; important wildlife areas; IQ on abiotic, biotic or cultural resources; first- person stories and quotes related to the interpretive message;
- Park and territorial regulations related to cultural or heritage resources in the park;
- Where applicable, resource or site-specific mapping for cultural or heritage areas;
- Traditional Inuit Place Names associated with areas in the park;
- Where applicable, identification of areas where visitor use is restricted or where guides are required;
- Images, illustrations, maps and park icons to highlight cultural and heritage significant sites or resources;
- Fun facts; and
- Local contact information for Inuit tourism promotion.

Careful consideration should be made to ensure that the brochure's text is written at a level that is appropriate and understandable for the community, particularly youth.

Additionally, as previously mentioned, there is also an opportunity to enhance the park's Heritage Appreciation Program through using new technology, such as mobile apps that feature virtual reality/augmented reality and other online-based interpretive tools. For example, QR codes added to brochures can be used to direct park users to specific online URLs where NP&SP could provide supplementary information about Iqalugaarjuup Nunanga and the NP&SP program. Additionally, QR codes linked to park-specific brochures and maps found online could be added to park welcome signage, making this information available to park users who might not have access to these printed materials during their park visit.



4.2.3 PARK MAP BROCHURE – YEAR 1-5

As an ‘Outdoor Recreation Park’, a new Park Map Brochure will be required to fulfill the park’s requirements for promotional materials. This map brochure should be geared toward all park visitors, and designed as described by the HA Framework (Section 4.2.4) so that it can double as a poster to be hung on walls and in public spaces for longer periods. This visual-driven publication should be available online for download, and printed in hard copy form for distribution within the community (e.g. at the Wildlife office, hotels, municipal office, airport, community library, and visitors centre).



The Park Map Brochure’s content should include:

- A strong image/map component on one side and details about the park on the reverse side;
- An inset or detailed context map showing the park and community, park boundary and IOL, access routes and ATV trails;
- Traditional Inuit Place Names associated with areas in the Park;
- Numerous high-quality images (photographs or illustrations) highlighting Inuit culture and heritage; sites of cultural significance; important wildlife areas; IQ on abiotic, biotic or cultural resources; brief interpretive messages and first-person stories and quotes related to the interpretive message;
- Key messaging on the recommended approaches to automobile uses in the park, safe and sustainable travel, best hunting practices, and travel in bear country;
- Park and territorial regulations related to cultural or heritage resources in the park;
- Resource or site-specific mapping for cultural or heritage area (where applicable).

As with other promotional and informational materials produced for the park, care should be taken to ensure that the text is written in a manner that is understandable and useful for the community.

Finally, this new map brochure should be developed as a complimentary series along with the park brochure booklet described above. It can also be made available to park visitors through QR codes on park signage.

4.3 PUBLIC COMMUNICATIONS

NP&SP currently has three public communications templates designed for news releases and PowerPoint presentations. There are two news release templates: one for newsletters and another for announcements.

The **Newsletter Template** can be used to communicate park information to residents of Rankin Inlet and partner organizations. The newsletter can be delivered to organizations impacted by the park; placed in public locations or in individual mailboxes; and posted on the website. The newsletter may have a variety of applications, such as: raising public awareness of a park issue; a project being undertaken in the park; or as a tool to increase awareness about the NP&SP Program or the park’s heritage (i.e. Traditional Inuit place names associated with areas in the Park). A copy of this template is provided in the appendix (section 6.4.1).

The **Announcement Template** can be used to communicate a specific piece of information to the public, such as a public meeting announcement or a safety issue in the park. The announcement will be posted in the community, in the park, on the website, or circulated to the public or partner organizations. A copy of this template is provided in the appendix (section 6.4.2).

A template for **PowerPoint Presentations** has also been developed for presentations that are given by NP&SP to the public, partner organizations, or committees associated with the park. A sample of this template can be found in the appendix (section 6.4.3).

These communication templates, once customized for use at Iqalugaarjuup Nunanga, can be used by NP&SP and the CJPMC to fulfill the park’s goal and objectives related to communicating with residents of Rankin Inlet and other audiences in order to increase awareness about park’s natural and cultural resources, and the rules, regulations, and best practices to use when visiting the park.

Specific actions for implementing these templates will be presented in Section 5.



4.4 COMMUNITY/CULTURAL EVENTS

As a strategic goal, NP&SP seeks to engage communities in heritage appreciation to ensure that residents and visitors value their parks, gain understanding and knowledge of the territory's natural and cultural heritage and realize tourism benefits associated with the park. To work toward this goal, NP&SP is required to host a community event on an annual basis that increase awareness of individual parks and Kajjausarviit: Nunavut Parks Program.

As such, the Iqalugaarjuup Nunanga Master Plan states that NP&SP staff will identify and participate in annual community events that increase awareness of Iqalugaarjuup Nunanga Territorial Park and Kajjausarviit: Nunavut Parks Program. Community events, such as Parks Day, will encourage engagement with the park's heritage and be promoted as tourism opportunities through the community's Inuit Tourism Strategy.

4.4.1 COMMUNITY OPEN HOUSE – ANNUALLY

The goals of the Iqalugaarjuup Nunanga Heritage Appreciation Program can also be achieved by NP&SP hosting annual Community Open Houses as a cultural event. An annual community open house would be planned to include programming that celebrates the heritage of the park and increases community awareness. The event could be held in the summer months to coincide with the most popular time for community use of the park, but should not be planned during traditional harvesting periods. The primary audience would be the residents of Rankin Inlet, but several secondary audiences (e.g. non-resident park visitors, local outfitters and guides) would also benefit. Additionally, this type of event could be planned in such a way that it would meet some of the educational/interpretive programming requirements for the park, and also promote tourism through the participation of local guides, outfitters and other park-related tourism providers.

The success of these types of community events often depends on a substantial volunteer effort from the local community. As such, the need for volunteers should be taken into account during the early planning phase for any community event. This event should also be linked to the Rankin Inlet Inuit Tourism Strategy, which is discussed later in section 5.3.2.

4.5 PARK-SPECIFIC EDUCATION PROGRAMS

Kajjausarviit: Nunavut Parks Program seeks to engage communities in parks and the protection and celebration of park heritage. Education programs provide an opportunity to bring youth into the parks, bring information about our parks into the classroom, and make information accessible for youth that have left school. The following education initiatives at Iqalugaarjuup Nunanga will support NP&SP in achieving the strategic goals and objectives for park-specific Educational Programs, and will advance the park's own goal and objectives for heritage appreciation as described below.

4.5.1 IN-PARK EDUCATIONAL PROGRAMS

In-park educational programming will be developed by NP&SP to teach park users, through interactive activities taking place at Iqalugaarjuup Nunanga, about both IQ and scientific knowledge. Potential locations include the Pavilion (Elders Cabin), Sandy Lake, Qamaviniqtaalik, or any of the four education hubs to be developed as per the Master Plan. Programming can also be offered in the community for residents who are not able to travel to the park. If these programs are held in the community, potential locations include the visitors centre, the park office, or the community hall.

4.5.1.1 *Learn-to Program – Year 1-10*

Through a park-specific “Learn To” Program at Iqalugaarjuup Nunanga, NP&SP will provide opportunities to connect youth and other audiences to the land and resources of the park through brief educational activities on park-related topics, such as fish harvesting, fishing tool making, food and clothing caching, wildlife management, and cultural sites/archaeological management. This activity will involve the planning and delivery of two-hour sessions in the park or community at set times during the year. All sessions should include a hands-on component to help engage participants. Advertisement of the “Learn To” Program sessions will be done through the schools, visitors centre, other community centres, radio, and online through social media. This program should also be linked to the Rankin Inlet Inuit Tourism Strategy (discussed later in section 4.5.2).

These short sessions can also provide an opportunity to engage park users and community members in discussions about some of the park’s management issues that were mentioned earlier (e.g. respect for the environment, protection of natural and cultural resources, safe and sustainable travel).

In addition to the existing “Learn to” programs created by NP&SP, the Rankin Inlet CJPMC would like to include sessions on:

- bird/habitat identification
- geocache activities
- making traditional tools
- butchering caribou
- minimal impact use (Kivalliq Energy x Jackson Lindell)
- skin preparation
- sewing basics
- the importance of water.



Successful completion of the “Learn-to” Program kits for Iqalugaarjuup Nunanga will enable NP&SP to offer a scheduled educational program that will engage youth and others with an interest in the park. The establishment of this program in Rankin Inlet will also help NP&SP achieve its strategic objective to support educational objectives for the IIBA through heritage appreciation activities, and will support the park goal and objective for Heritage Appreciation: to share the park’s theme “The Land Around the River of Little Fishes” and associated sub-themes, and increase community awareness about the park, its important resources, and various management concerns.

4.5.1.2 *In-park Camps – Ongoing*

In-park camps are another way to bring youth into Iqalugaarjuup Nunanga to learn about heritage resources. Where feasible, any camp related to and supporting the park’s heritage appreciation can be developed and delivered in the park in partnership with other agencies. For example, if another organization is planning a youth camp, NP&SP may participate as a contributor. The HA Strategy proposes a staged approach to contributing to in-park camps until such time as NP&SP is able to organize its own camps (HA Strategy, section 3.4).

NP&SP is especially encouraged to work with partner organizations to develop and support the delivery of an educational camp where the park Master or Management Plan identifies an opportunity for an oral history project, archaeological project or science camp in the park. For Iqalugaarjuup Nunanga, there will be an opportunity to organize and deliver in-park camps in conjunction with the Archaeological and Oral History ‘Special Projects’ that will be discussed below in Section 4.6.

The provision of in-park camps at Iqalugaarjuup Nunanga will offer youth an opportunity to appreciate and learn about the park for an extended period of time. Through these types of programs, park users will develop a connection to the park and increase their awareness of the park’s stories, resources and management challenges.

4.5.1.3 Outdoor Classroom – Ongoing

Linking with the educational modules for the park, effort should be made to use the park as an Outdoor Classroom for Rankin Schools and residents, with NP&SP staff and local experts providing guided walks or talks about the resources of the park; story telling by Elders. These events could be videotaped as an archive for use online and in the heritage/visitor Centre.

To facilitate Heritage Appreciation Program delivery and educational activities at Iqalugaarjuup Nunanga, the CJPMC has recommended the development of four (4) education hubs in the park, which are reflected in the Masrer Plan. These education hubs, which will be designed as low-profile platforms with integrated seating and interpretive panels, will provide specific locations in the park where educational programs can be delivered.

4.5.2 EDUCATION MODULES – YEAR 6-10

A long-term goal of the Heritage Appreciation Program is to work with the Department of Education (GN) to prepare curriculum about territorial parks for delivery in all Nunavut schools.

One of the requirements of the NP&SP Heritage Appreciation Program is the development of education materials for delivery through Nunavut schools. The objective of this education program aimed at school-age children is to increase awareness of Nunavut Parks and opportunities for careers related to parks. In the long-term, NP&SP and the Department of Education (GN) will work together to prepare curriculum about parks for delivery to students in grades 4, 7 and 10 in all Nunavut schools, a process that will likely take 10 to 20 years. In the meanwhile, NP&SP, through partnership with the Department of Education and Department of Culture and Heritage, will develop park-specific community-driven education resource kits based on a standard model and framework as described in the HA Framework (section 4.6).

The Framework will be referenced for the development of a teacher's resource kit about Iqalugaarjuup Nunanga to be designed for use by Rankin Inlet schools in grades 7 and 10 as part of the general curriculum, and a special curriculum in archaeology will be developed for grade 11. Students will learn about the park, and develop an appreciation of both the cultural and natural heritage of the park by examining its rich history and its resources. Students will also learn about park management and the skills required for protecting, preserving, and presenting (through interpretation) the park's natural and cultural resources.

The completion of these actions will advance the park's objective to share the unique story "The Land Around the River of Little Fishes", and will increase awareness about the park and the management of its natural and cultural resources with local youth.

Finally, as mentioned above, NP&SP is also required to develop educational materials specific to grade 4 (see Appendix 3, Table 9, HA Framework). Because these materials may or may not be developed by NP&SP during the term of this Iqalugaarjuup Nunanga HAP, they have not been included. Therefore, their future development and implementation will need to be considered for Iqalugaarjuup Nunanga's next heritage appreciation planning cycle.



4.5.3 YOUTH CAREER DEVELOPMENT

NP&SP is obligated by the IIBA to establish and maintain appropriate communication linkages with Maani Ulujuk Ilinniarvik (the high school in Rankin Inlet) to regularly communicate and update tourism- and parks-related information to students through various media, and career fairs.

To help the park achieve this objective, NP&SP has developed an Iqalugaarjuup Nunanga-specific package of information directed at Youth in Rankin Inlet to ensure that they have an awareness of parks and park career opportunities. This “Careers in Parks” package will be provided to the high school, and shared by NP&SP through career fairs and presentations at the school.

The package includes the following materials:

- An Iqalugaarjuup Nunanga-specific brochure about working in Nunavut’s Parks;
- Information about Inuit benefits and Nunavut’s Parks;
- An Interview Guide for Nunavut Youth;
- NP&SP Job Descriptions;
- A guide on how to apply for jobs with NP&SP;
- A short quiz to assess an individual’s compatibility for working in parks; and
- A Rankin Inlet-specific “Careers in Parks” PowerPoint Presentation.

The Rankin Inlet CJPMC has approved this career package in principal, but it has yet to be implemented. The Heritage Appreciation Action Plan for Iqalugaarjuup Nunanga (Section 5) provides recommended actions to help NP&SP ensure these materials are used regularly and effectively to engage youth as required.

4.6 SPECIAL PROJECTS

To continue gathering information and IQ about the park, the Iqalugaarjuup Nunanga Master Plan and Management Plan have outlined several “Special Projects” to be phased in over time based on the available capital budget and approved CJPMC annual work plans. These projects, which are summarized below, all have the potential to contribute in some way to the park’s Heritage Appreciation Program, either through providing additional information about the park’s cultural resources, or through the creation of tools that can be used to share the heritage of the park. .

4.6.1 ARCHAEOLOGICAL SITES SURVEYS – YEARS 1-2; 5-6 AND 7-10

Archaeological projects will be required prior to development of new infrastructure identified in the Master Plan, or as required when a culturally significant site or known archaeological site is under threat from damage or loss. Fifty-six (56) archaeological sites have been registered within the park, most of which were surveyed in the 1970’s or 1990’s. The archaeological registry records, however, do not consistently specify the quantity of features (e.g. tent rings, caches) in each site, but rather, only note that multiples of these features are present. The entire boundary of the park has also not been surveyed and there are some unregistered features that have been reported. As a result, it is currently unknown how many individual archaeological features exist in the park.

Through partnerships with the GN Department of Culture and Heritage and Inuit Heritage Trust, archaeological research at Iqalugaarjuup Nunanga will continue the data collection and understanding of cultural resources that can be included in the park’s Heritage Appreciation Program. As per the IIBA, Archaeological Sites Surveys will be undertaken with input from the CJPMC and local Elders, and opportunities for participation of local Inuit field students for all research projects in the park. Oral histories associated with each site and/or artefact will be documented.

Three priority areas have been identified by NP&SP and the Rankin Inlet CJPMC for future archaeological research and are described in the Master Plan (sections 2.4.4.6 and 5.2) and Management Plan (section 2.5 and 3.1). These include locations associated with proposed infrastructure and development zones, and other areas in the park to be identified by the CJPMC in the future.

These archaeological surveys provide NP&SP with an opportunity to deliver the grade 11 education modules and in-park camps (discussed earlier). Continued archaeological work at the park will also further demonstrate the value and significance of the site as an important place for Inuit; and the collection of knowledge around the cultural significance of Iqalugaarjuup Nunanga has the potential to enhance the interpretive content for the park’s Heritage Appreciation Program and theme, “The Land around the River of Little Fishes”.



4.6.2 SOD HOUSE RECONSTRUCTION PROJECT – YEAR 3-4

The Iqalugaarjuup Nunanga Master Plan recommends a special project to assess and potentially re-design or reconstruct the sod house at Qamanaviqtaalik in partnership with the families who have history and knowledge of the original construction, community members, and cultural organizations.

Content for signage related to the Sod House project will be developed in partnership with local partners and IHT.

4.6.3 QAMAVINIQTALIK HISTORIC SITE AUGMENTED REALITY – YEAR 5-6

The Iqalugaarjuup Nunanga Master Plan recommends the development of an interpretive app using augmented reality technology for use along the trail through the historic site to provide images of key archaeological features, and audio/visual stories, to interpret the historic occupation of the site. NP&SP will seek partnerships for the project.

4.6.4 SANDY LAKE VEGETATION REGENERATION PROJECT – YEAR 7-10

There are many areas in the park where vehicle use has disturbed topsoil and killed tundra vegetation. Sandy Lake is an important recreation area. The land around Sandy Lake, comprised of a thin layer of soils over sand and esker deposits, has been broadly disturbed by ATV use. Monitoring has identified a reduction in Sandy Lake water levels. It is unknown, however, if water levels and vegetation loss are related. The Sandy Lake Vegetation Regeneration project could seek to identify methods of bringing vegetation back to areas disturbed by vehicles, the viability of regeneration in this environment, and allow for the impact of vegetation in climate-related changes in the park environment to be researched. Partnerships and the involvement of the schools and youth in Rankin Inlet are encouraged.

4.6.5 CLIMATE AND PERMAFROST MONITORING – ONGOING

As per the Iqalugaarjuup Nunanga Management Plan, climate change monitoring, and the impacts of climate change on the permafrost and active surface layer of soils in the park, will be ongoing operational or research priorities. NP&SP will continue existing research partnerships (e.g. NRCan) and seek additional partnerships as required. Research may be undertaken in multiple years to establish base line data over time. Special projects related to climate change can be linked to park-related educational opportunities, such as the Education Modules, Outdoor Classroom, or school/community presentation or lecture series.

4.7 INTERPRETIVE TRAINING TOOLS

According to the Master Plan, potential for outfitter services for Iqalugaarjuup Nunanga Territorial Park include guided tourism activities, such as guided transport to the park by ATV, truck or bus, or rental of vehicles for self-guided trips. Guided interpretive visits to the park are encouraged, and outfitter training may be recommended in the Rankin Inlet Tourism Strategy for interpretive guiding in the park. To support this initiative, tools must be developed through the Heritage Appreciation Program for use by local outfitters, such as interpretive scripts, suggested sites of cultural significance to visit, and suggested interpretive activities. The following actions will help NP&SP and the CJPMC achieve the desired outcomes for park interpretation.

4.7.1 IQALUGAARJUUP NUNANGA INTERPRETIVE SCRIPT – YEAR 1-2

According to the HA Framework, interpretative scripts should be prepared for local outfitters and guides to reference when a park master plan identifies the need for park interpretation. Resources that support the inclusion of appropriate and accurate heritage appreciation messaging in the materials, activities, and presentations of local outfitters, guides and tourism operators, should be used and referenced in the park-specific interpretative script.

For Iqalugaarjuup Nunanga, the script should highlight important stories and legends, resources of significance, and the cultural connection of local Inuit to the park landscape. Reference to other tourism opportunities and local Inuit Tourism Providers should also be included where applicable.

The development of this specialized tool for use by Inuit tourism providers, business operators and park staff in Rankin Inlet will help NP&SP achieve the park's vision to share the theme “The land around the river of little fishes” with a variety of audiences, create community benefits through tourism opportunities, and provide visitors with a safe and positive experience in the park and in the community.

4.7.2 PARK-SPECIFIC INTERPRETIVE TRAINING – YEAR 1-2

To further support NP&SP in providing park-related services, an annual interpretive training program should be offered to NP&SP staff, local tour operators, and outfitters. This training would serve as an orientation to educate new and returning NP&SP summer staff about the special features and history of the park, and park regulations. It would also provide an introduction to the park for new operators, and refresher for established guides. A park orientation session also provides NP&SP with an annual opportunity to share updates on the park, such as management directives or issues that might affect operators' services.

As a component of this training program, participants could be invited to participate in the Community/Cultural Events discussed earlier in section 4.4, which would provide an opportunity for them to practice their park interpretive skills, and a chance for tourism-related businesses to promote their services. The Iqalugaarjuup Nunanga Management Plan includes a budget for such heritage appreciation and Inuit Tourism Strategy programs.



4.8 ANNUAL STUDENT AWARD

Per the IIBA for Territorial Parks, NP&SP is committed to delivering an Annual Award to high school students who are top achievers in park-related field of studies:

Nunavut Parks will communicate with the local high school to nominate a student for this annual award. If the local high school does not have park-related field of studies, Aulajaaqtut studies will be used. This award should be presented at the annual Parks Day event or at the school's year-end ceremony.

Each year, a high school student in Rankin Inlet will receive a Park Award for excellence in park-related academic topics from the Rankin Inlet CJPMC.

4.9 UPDATES TO THE PARK'S IMAGE, VIDEO AND DOCUMENT COLLECTION

This section identifies the various resources that are currently needed to support the actions of this Plan.

4.9.1 PARK IMAGE DATABASE – YEAR 9-10

The HA Framework identifies the need for NP&SP to develop park-specific image databases with high-quality professionally commissioned images suitable for marketing Nunavut Parks. NP&SP has already collected a significant amount of information and resources related to the park's theme "The land around the river of little fishes" that can support continued development of the park's Heritage Appreciation Program. However, there is a notable shortage of high-quality photographs of the park, particularly photos of the park in all seasons, photos of the community use of the park, and of the tourist attractions in the park.

There will also be a need to update the park's photo collection in the coming years, specifically following the development and installation of new park infrastructure. A series of high-quality photographs featuring Iqalugaarjuup Nunanga's facilities and amenities should be taken at that time and used to support the park's marketing initiatives.

Archival photos can be researched and purchased through the Library and Archives Canada.

Completing these actions will help NP&SP meet the strategic goal for public communications, and specifically, the objective to update park-specific tools in compliance with completed interpretive plans. Updating the park image database will benefit all audiences through the subsequent production of heritage appreciation materials (brochures, online, educational) that feature stunning images of the park landscape, park services and amenities, and people enjoying the park.

4.9.2 WEB-BASED VIDEO – ONGOING

Web-based video (e.g. YouTube) is a product that can be broadcast on the parks website, displayed in the Visitor Centre, and used in educational programs for Youth who are in or out of school. As such, one video can serve several objectives to meet the needs of multiple audiences in Iqalugaarjuup Nunanga's Heritage Appreciation Program. One example could include videotaping Elder interviews as part of oral history projects to share with the public.

Other activities that NP&SP organizes for the park, such as archaeological projects, camps, special presentations, or people using the park, can also be recorded and edited into short web-based video to promote park activities, stories/themes, and other important information to all park audiences through a variety of media (e.g. online, school presentations, job fairs, community events). Park users can also be encouraged to contribute their own images and videos of the park as an interactive feature on the NP&SP website.

4.9.3 BIBLIOGRAPHIC GUIDE TO THE PHOTO AND DOCUMENT ARCHIVE – YEAR 4-5

To aid in the organization and future collection of the park's HA-related resources, NP&SP should work to develop a *Bibliographic Guide to the Document and Photograph Archive* for Iqalugaarjuup Nunanga (see appendix 6.13 for example). This catalogue should be developed to identify park-related documents, digital images, and archival material that are either held in the NP&SP database, in other GN departments (e.g. ED&T), or are available from an archival institution. Once developed, this tool can be used by park staff or contractors to easily find specific information, documentation or visual resources related to the park.







5 IQALUGAARJUUP NUNANGA HERITAGE APPRECIATION IMPLEMENTATION

This section provides two action plans and a checklist that will aid NP&SP in working towards the long-range and annual goals that are desired for the park's Heritage Appreciation Program. This section also discusses the requirements and responsibilities for HAP implementation, as well as recommendations for monitoring and evaluation of the park's HA Program

5.1 ACTIONS REQUIRED TO COMPLETE IQALUGAARJUUP NUNANGA'S HERITAGE APPRECIATION PROGRAM

The Table 15 corresponds to the “one-time” activities and actions outlined previously in Section 4, such as the creation of infrastructure, materials or educational programs. It sets target dates and budgets, and provides details and requirements that are necessary for the successful implementation of these actions. These actions should be reviewed by NP&SP on a yearly basis to ensure that they are considered for inclusion in annual work plans and budgets.

5.2 IMPLEMENTATION OF RECURRING HERITAGE APPRECIATION PROGRAMS

The Table 16 outlines the delivery requirements for “annually-recurring” activities and programs that will help NP&SP fulfill the goals and objectives of the park's HAP. This list of activities and programs should be reviewed by NP&SP on yearly basis to ensure that they are appropriately addressed in the annual work plan and budget.





Table 15: One-time activities and actions required to complete Iqalugaarjuup Nunanga’s HAP

HAP COMPONENT	DESCRIPTION	TIMEFRAME	CAPITAL COST ESTIMATE *	CAPITAL COST TOTAL	REFERENCE DOCUMENT	PLANNING CONSIDERATIONS	STATUS (to be completed by NP&SP)
Interpretive Training Tools	<ul style="list-style-type: none">Development of park-specific interpretive script and training program for park staff and tourism operators in Rankin Inlet	Year 1-2	\$10,000	\$10,000	<ul style="list-style-type: none">HAP: 4.7HA Framework: 4.5.3Master Plan: 2.4.4Mgmt Plan: 3.3.12	<ul style="list-style-type: none">Project to be delivered by NP&SP	
Signage for Intersection Alignment (site 3)	<ul style="list-style-type: none">(1) sign integrated into temporary barrierContent:<ul style="list-style-type: none">Road closureRegeneration of old road	Year 1-2	Sign design, materials and fabrication = \$1,500 Shipping = \$500	\$2,000	<ul style="list-style-type: none">HAP: 4.4.1.4	<ul style="list-style-type: none">NP&SP Signage ManualCost Estimates are Class D	
Signage at Qamaviniqtaalik Area Cultural Site (site 5&6)	<ul style="list-style-type: none">(1) Regulatory Sign: protection of historic subterranean houses and archaeological resourcesIntegrated into barrier for subterranean house protection	Year 1-2	Barrier: materials and construction = \$5,000	\$5,000	<ul style="list-style-type: none">HAP: 4.1.2, Table 12Master Plan: 4.4 Table 10 & 5.2 Table 16	<ul style="list-style-type: none">Cost Estimates are Class D	
Pavilion Sign	<ul style="list-style-type: none">(1) Information/Regulation sign	Year 1 -2	Sign design, materials and fabrication = \$1,750 (each) Shipping = 250.00	\$2,000	<ul style="list-style-type: none">HAP: Table 8	<ul style="list-style-type: none">NP&SP Signage ManualCost Estimates are Class D	
Archaeological Surveys – Priority Areas 1	<ul style="list-style-type: none">Priority 1 areas are locations identified as development sites	Year 1 -2	One-year Project Per Year = \$30,000	\$30,000	<ul style="list-style-type: none">HAP: 4.6.1Master Plan: 4.2.1, 4.4.3 & 5.2 Table 17Mgmt Plan: 2.5 Table D & 3.1	<ul style="list-style-type: none">Identify PrioritiesProject should be planned to coincide with grade 11 education program and in-park camp, and offers outdoor classroom opportunities for local schools	
Park Boundary & IOL Markers	<ul style="list-style-type: none">(4) Boundary trail icon posts(2) IOL icon posts	Year 1 -2	Sign design, materials and fabrication = \$1,500 (each) or \$9,000 total Shipping = \$500	\$9,500	<ul style="list-style-type: none">HAP: 4.1.2 Table 14Master Plan: 4.4.2.3, Table 15; 5.2 Table 16	<ul style="list-style-type: none">NP&SP Signage ManualCost Estimates are Class D	
In-park directional markers	<ul style="list-style-type: none">(5) Directional icon posts	Year 1 -2	Sign design, materials and fabrication = \$1,500 (each) or \$6,000 total Shipping = \$250	\$6,250	<ul style="list-style-type: none">HAP: 4.1.2 Table 12 & 142019 Master Plan 4.4.2.4, Table 15; 5.2 Table 16	<ul style="list-style-type: none">NP&SP Signage ManualCost Estimates are Class D	
Directional markers between town and park	<ul style="list-style-type: none">(6) Directional icon posts	Year 1-2	Sign design, materials and fabrication = \$1,500 (each) or \$9,000 total Shipping = \$500	\$9,500	<ul style="list-style-type: none">HAP: 4.1.2 Table 142019 Master Plan 4.4.2.5, Table 15; 5.2 Table 16	<ul style="list-style-type: none">NP&SP Signage ManualCost Estimates are Class D	

HAP COMPONENT	DESCRIPTION	TIMEFRAME	CAPITAL COST ESTIMATE *	CAPITAL COST TOTAL	REFERENCE DOCUMENT	PLANNING CONSIDERATIONS	STATUS (to be completed by NP&SP)
Park Office Sign	<ul style="list-style-type: none"> (1) Information sign Content development, design, printing and installation 	Year 1-2	Sign design, materials and fabrication = \$2,500 Shipping = \$250	\$2,750	<ul style="list-style-type: none"> <i>HAP: 4.1.2 Table 14</i> <i>2019 Master Plan 2.4.3; 5.2 Table 16</i> 	<ul style="list-style-type: none"> <i>NP&SP Signage Manual</i> <i>Cost Estimates are Class D</i> 	
Website	<ul style="list-style-type: none"> Content updates for park theme in keeping with the Master Plan Addition of supplemental tools (e.g. library, links, image gallery) Addition of new content as it is developed (e.g. white papers, videos, education modules) 	Year 1-5	\$12,000	\$12,000	<ul style="list-style-type: none"> <i>HAP: 4.2.1</i> <i>HA Strategy: 3.5</i> 	<ul style="list-style-type: none"> <i>Project to be delivered by NP&SP</i> <i>Updates to theme should be completed as soon as possible</i> <i>Development and addition of new online tools should be completed as/when possible</i> 	
Park Brochure Booklet	<ul style="list-style-type: none"> Content update, design and printing 	Year 1-5	Development: \$10,000 Printing run of 500 copies: \$15,000	\$25,000	<ul style="list-style-type: none"> <i>HAP: 4.2.2</i> <i>Master Plan: 2.4.4</i> <i>Mgmt Plan: 3.5 & 4.4</i> <i>HA Framework: 4.2.3</i> 	<ul style="list-style-type: none"> <i>Project to be delivered by NP&SP</i> <i>Updates to the Park Image Database may be required prior to developing the park brochure</i> 	
Park Map Brochure	<ul style="list-style-type: none"> Content Development, Design and Printing 	Year 1-5	Development: \$3,000 Printing run of 500 copies: \$15,000	\$18,000	<ul style="list-style-type: none"> <i>HAP: 4.2.3</i> <i>Mgmt Plan: 3.5 & 4.4</i> <i>HAP Framework: 4.2.4</i> 	<ul style="list-style-type: none"> <i>Project to be delivered by NP&SP</i> <i>Updates to the Park Image Database may be required prior to developing the park map brochure</i> 	
“Learn to” Program	<ul style="list-style-type: none"> Development of Iqalugaarjuup Nunanga specific programs and kits 	Year 1-5	Materials: \$2,000	\$2,000	<ul style="list-style-type: none"> <i>HAP: 4.5.1.1</i> <i>Master Plan: 2.4; 2.4.1.3; 2.4.2; 2.4.5.2</i> <i>Mgmt Plan: 1.6.2; 3.5 & 4.4 Table K</i> <i>HA Strategy: 3.4</i> 	<ul style="list-style-type: none"> <i>Project to be delivered by NP&SP</i> 	
Sod House Programming Guidelines	<ul style="list-style-type: none"> Sod House promotional and information materials; operational / maintenance / use guidelines Develop interpretive and education programs about the project 	Year 1-5	Development = \$8,000	\$10,000	<ul style="list-style-type: none"> <i>HAP: 4.6.4</i> <i>Master Plan: 3.2 Table 3</i> <i>Mgmt Plan: 3.1; 4.4 Table K</i> 	<ul style="list-style-type: none"> <i>Programming guidelines will be prepared during the reconstruction project, with input from the project partners: local knowledge holders, NJPMC and IHT</i> 	

HAP COMPONENT	DESCRIPTION	TIMEFRAME	CAPITAL COST ESTIMATE *	CAPITAL COST TOTAL	REFERENCE DOCUMENT	PLANNING CONSIDERATIONS	STATUS (to be completed by NP&SP)
Sod House Reconstruction	<ul style="list-style-type: none"> Reconstruction of the sod house at Qamaviniqtaalik 	Year 3-4	Contribution funding from NP&SP for a partnering project = \$25,000	\$25,000 Total Cost of project to be determined	<ul style="list-style-type: none"> <i>HAP: 4.6.4</i> <i>Master Plan: 3.2 Table 3; 4.4.1.7, Table 10; 5.2 Table 16</i> <i>Mgmt Plan: 2.5, Table D;</i> 	<ul style="list-style-type: none"> <i>Funding and management partnerships to be developed with local knowledge holders, NJPMC and IHT</i> 	
Signage Kiosks in park and community	<ul style="list-style-type: none"> (4) kiosks to provide orientation, regulations, safety, and general park information Content development, design, printing and installation Locations: <ul style="list-style-type: none"> - Site 1: Pavilion (Elder’s Cabin) parking lot - Site 5/6: Qamaviniqtaalik parking lot - Site 7: Park entrance - Outside the Kivalliq Regional Visitor Centre 	Year 3-4	Kiosk foundations (4) in concrete = \$3,000 Kiosk structure materials and construction = \$2,000 (each) or \$8,000 total Panel design and fabrication (4) = \$15,000 Shipping = \$1,500	\$27,500	<ul style="list-style-type: none"> <i>HAP: 4.1.2 Tables 8, 12, 13 & 14</i> <i>Master Plan: 2.4.3; 4.4.1.1-8; 4.4.2.1-6 & 5.2 Table 16</i> 	<ul style="list-style-type: none"> <i>NP&SP Signage Manual</i> <i>Year 3: plan and design sign content</i> <i>Year 4: fabricate and install</i> <i>Cost Estimates are Class D</i> 	
Kivalliq Regional Visitor Centre Display	<ul style="list-style-type: none"> (1) Interior Display Content development, design, printing and installation 	Year 3-4	Display design, materials and fabrication = \$20,000 Shipping and installation = \$2,000	\$22,000	<ul style="list-style-type: none"> <i>HAP: 4.1.2 Table 14</i> <i>Master Plan: 2.4.3; 4.4.2.6 & 5.2 Table 16</i> 	<ul style="list-style-type: none"> <i>NP&SP Signage Manual</i> <i>Year 3: plan and design sign content</i> <i>Year 4: fabricate and install</i> <i>Cost Estimates are Class D</i> 	
Signage at Qamaviniqtaalik river access turn around (site 4)	<ul style="list-style-type: none"> Content development, design, printing and installation of 1 panel: <ul style="list-style-type: none"> - Water advisory Regulatory sign 	Year 3-4	Sign post = \$500	\$500	<ul style="list-style-type: none"> <i>HAP: 4.1.2 Table 11</i> <i>Master Plan: 4.4.1.5, table 8 & 5.2 Table 16</i> 	<ul style="list-style-type: none"> <i>NP&SP Signage Manual</i> <i>Partner with Dept. Health for safety message</i> 	
Archaeological Surveys – Priority Areas 2	<ul style="list-style-type: none"> Priority Areas 2 are identified in the Action Plan as threatened locations: <ul style="list-style-type: none"> - Sandy Lake area - Land adjacent to all roads and trails - Park entrance 	Year 5-6	One-year Project Per Year = \$30,000	\$30,000	<ul style="list-style-type: none"> <i>HAP: 4.6.1</i> <i>Master Plan: 4.2.1, 4.4.3 & 5.2 Table 17</i> <i>Mgmt Plan: 2.5 Table D & 3.1</i> 	<ul style="list-style-type: none"> <i>Identify Priorities</i> <i>Project should be planned to coincide with grade 11 education program and in-park camp, and offers outdoor classroom opportunities for local schools</i> 	
Signage at Heritage Education Areas	<ul style="list-style-type: none"> Content development, design, printing and installation of signage at (4) gathering platforms: <ul style="list-style-type: none"> - Site 1: Pavilion (Elder’s Cabin) - Site 4: Meliadine River Bird Watching Site - Site 7: Park Entrance - Site 5/6: Qamaviniqtaalik 	Year 5-6	Panel design and fabrication (4) = \$15,000 in total Shipping = \$1,500	\$16,500	<ul style="list-style-type: none"> <i>HAP: 4.1.2, Table 8, 11, 12 & 13; 4.5</i> <i>Master Plan: 4.4.1.1, Table 4; 4.4.1.5 Table 8; 4.4.1.7 Table 10; 4.4.1.8 Table 11; 4.4.2.2; 5.2 Table 16</i> 	<ul style="list-style-type: none"> <i>NP&SP Signage Manual</i> <i>Integrated signage must have low-profile design with minimal impact on surrounding landscape</i> <i>Use symbols/icons instead of text when possible</i> 	
Signage at Qamaviniqtaalik area viewing platform	<ul style="list-style-type: none"> Panoramic sign panels (2) to be integrated into viewing platform 	Year 5-6	Panel design and fabrication = \$8,500 in total Shipping = \$1,500	\$10,000	<ul style="list-style-type: none"> <i>HAP: Table 12,</i> <i>Master Plan: 4.4.1.7, Table 10, Table 16</i> 	<ul style="list-style-type: none"> <i>NP&SP Signage Manual</i> <i>Integrated signage must have low-profile design with minimal impact on surrounding landscape</i> <i>Use symbols/icons instead of text when possible</i> 	

HAP COMPONENT	DESCRIPTION	TIMEFRAME	CAPITAL COST ESTIMATE *	CAPITAL COST TOTAL	REFERENCE DOCUMENT	PLANNING CONSIDERATIONS	STATUS (to be completed by NP&SP)
Qamaviniqtaalik Historic Site Augmented Reality	Content development and design of an interpretive app using augmented reality technology for use along the trail through the historic site: <ul style="list-style-type: none"> - provide images of key archaeological features - audio/visual stories, to interpret the historic occupation of the site. 	Year 5-6	NP&SP contribution to project = \$10,000 Additional funding to be sought through partnerships	\$10,000 + partner funding	<ul style="list-style-type: none"> • <i>HAP: 4.6.3</i> • <i>Master Plan: 2.4.3; 4.4.3; 5.2 Table 17</i> 	<ul style="list-style-type: none"> • <i>Seek partnerships for the project.</i> 	
Sandy Lake Area Signage (site 2)	<ul style="list-style-type: none"> • (1) Public safety sign • (1) Trail closure sign to protect tundra 	Year 5-6	Public safety sign: materials and construction = \$3,000.00 Barriers with signs: materials and construction = \$500	\$3,500	<ul style="list-style-type: none"> • <i>HAP: 4.1.2 Table 9</i> • <i>Master Plan: 4.4.1.3 Table 6; 5.2 Table 16</i> 	<ul style="list-style-type: none"> • <i>NP&SP Signage Manual</i> 	
Education Modules	<ul style="list-style-type: none"> • Development of grade 7, 10 & 11 teacher education kits and online resource materials 	Year 6-10	Grade 7 modules = \$35,000 Grade 10 modules = \$30,000 Grade 11 modules = \$25,000	\$90,000	<ul style="list-style-type: none"> • <i>HAP: 4.5.2</i> • <i>Master Plan: 2.4.2; 2.4.3; 2.4.5.1;</i> • <i>Mgmt Plan: 4.4 Table K</i> 	<ul style="list-style-type: none"> • <i>Project will include Iqalugaarjuup Nunanga specific and general content.</i> • <i>Through partnership with the GN Dept. of Education and Dept. of Culture and Heritage.</i> • <i>Cost Estimates are Class D</i> 	
Archaeological Surveys – Priority Areas 3	<ul style="list-style-type: none"> • Priority areas 3 are identified in the Action Plan as unrecorded sites: <ul style="list-style-type: none"> - Unrecorded sites - west side of the river 	Year 7-10	One-year Project Per Year = \$30,000	\$30,000	<ul style="list-style-type: none"> • <i>HAP: 4.6.1</i> • <i>Master Plan: 4.2.1, 4.4.3 & 5.2 Table 17</i> • <i>Mgmt Plan: 2.5 Table D & 3.1</i> 	<ul style="list-style-type: none"> • <i>Identify Priorities</i> • <i>Project should be planned to coincide with grade 11 education program and in-park camp, and offers outdoor classroom opportunities for local schools</i> 	
Sandy Lake Vegetation Regeneration Project	<ul style="list-style-type: none"> • Iqalugaarjuup Nunanga specific project 	Year 7-10	NP&SP contribution to project = \$10,000 Additional funding to be sought through partnerships	\$10,000 + partner funding	<ul style="list-style-type: none"> • <i>HAP: 4.6.5</i> • <i>Master Plan: 4.4.3; 5.2 Table 17</i> 	<ul style="list-style-type: none"> • <i>Project will involve partnerships and the involvement of the schools and youth in Rankin Inlet</i> 	
Future Airport Display or other in town locations	<ul style="list-style-type: none"> • Content development, design, printing and installation 	Year 7-10	Display design, materials and fabrication = \$20,000 Shipping = \$2,000	\$22,000	<ul style="list-style-type: none"> • <i>HAP: 4.1.2; Table 14</i> • <i>Master Plan: 4.4.2.6; 2.4.3 & 5.2 Table 16</i> 	<ul style="list-style-type: none"> • <i>NP&SP Signage Manual</i> • <i>Cost Estimates are Class D</i> 	
Updates to Park Image Database	<ul style="list-style-type: none"> • Professional photos of park 	Year 9-10	Professional Photographer = \$12,000	\$12,000	<ul style="list-style-type: none"> • <i>HAP: 4.9.1</i> • <i>HA Strategy: 3.5</i> 	<ul style="list-style-type: none"> • <i>Project to be delivered by NP&SP</i> • <i>Completion of this action is recommended after new park infrastructure is completed</i> 	
Education Building	<ul style="list-style-type: none"> • Small building with interior and exterior education spaces for delivery of park Heritage Appreciation program to accommodate up to 18 people: three 8 foot long folding tables; 18 folding chairs; two white boards; one bulletin board; one shelving/storage unit 	Year 11-15	Procurement of interior furnishings and displays	\$3,500	<ul style="list-style-type: none"> • <i>HAP: 3.1 Table 3</i> • <i>Master Plan: 4.4.1.7 Table 10; 5.2 Table 16</i> 	<ul style="list-style-type: none"> • <i>Year 11 – planning, design and contracting</i> • <i>Year 12 – construction of building</i> • <i>Year 13 – exterior landscaping and interior furnishing</i> 	

* All Cost Estimates are ‘Class C’ except where indicated.

Table 16: Annually recurring actions and activities under Iqalugaarjuup Nunanga’s Heritage Appreciation Program.

HAP ACTION	DESCRIPTION	IMPLEMENTATION TIMEFRAME	REFERENCE DOCUMENT	PLANNING CONSIDERATIONS
Public Communications	Use of the parks’ communication templates, radio, or social media to announce events and meetings, or messages about park management issues	As/when applicable or required	HAP 4.3	<ul style="list-style-type: none">• To be delivered by NP&SP• Newsletters and announcements will need to created to address the ongoing park management issues described in the management plan and HAP• NP&SP will need to establish a protocol for issuing official notices to ensure consistency across the territory• NP&SP & the Rankin Inlet CJPMC will also need to establish a protocol for issuing messages that the CJPMC may want to disseminate
Parks Day	Planning and hosting an annual Parks Day Event to coincide with Canada’s Parks Day	Annually (on or around the third Saturday of July)	HAP: 2.5.1, 4.4 HA Strategy: 3.3	<ul style="list-style-type: none">• Project to be delivered by NP&SP and adapted from existing Parks Day programming currently offered at Sylvia Grinnell Territorial Park in Iqaluit.• The Manager Parks: Heritage Appreciation will provide support or information to the local tourism coordinator or individual responsible for the community event as required.• This will include promoting the community, providing park information to share with residents and visitors attending the community event, and assistance in planning the community event• Must include cultural components, e.g. Learn-to Program sessions, interpretive presentations
Community Open House	Planning and hosting an annual Community Open House to coincide with the most popular time for community use of the park	Annually in early August	HAP 4.4.1	<ul style="list-style-type: none">• Project to be delivered by NP&SP• Should be planned to benefit residents, visitors• Should be planned and promoted as a tourism event to benefit local outfitters/guides• Must include cultural components, e.g. Learn-to Program sessions, interpretive presentations
“Learn-to” Program	Brief educational sessions used to teach topics that are relative to the park and its resources.	Regularly scheduled during park season	HAP: 4.5.1.1 Mgmt Plan: 3.5; 4.4 Table K HA Strategy: 3.4 4.4.2.1	<ul style="list-style-type: none">• Should be advertised through the schools, Youth Centre, radio, community centres and through social media• Can be delivered in conjunction with other activities and programs such as Community Events (Parks Day, Community Open House), school presentations, in-park camps
In-Park Camps	To provide in-park camp experiences for local students and Youth	As/when applicable	HAP 4.5.1.2 HA Strategy 3.4	<ul style="list-style-type: none">• To be delivered through partnership with other organizations (e.g. schools, IHT)• Can be use for any educational events or programs that can benefit from an in-park camp component
Park-Specific Interpretive Training	To provide annual training on interpretation and park management updates	Annually	HAP: 4.7 Mgmt Plan: 4.3.4	<ul style="list-style-type: none">• For NP&SP staff, local Inuit tourism operators
Climate and Permafrost Monitoring	Iqalugaarjuup Nunanga specific research and monitoring of climate change impacts in the park	Annually	HAP: 4.6.3 Master Plan: 4.4.3 & 5.2 Table 17 Mgmt Plan: 1.6.2	<ul style="list-style-type: none">• Partnership with NRCan & Nunavut Climate Change Centre Secretariat
Youth Career Development	To develop partnerships with Rankin Inlet’s schools’ teachers and principals to share information about Nunavut Parks, and provide information to students about careers in parks, Kajjausarviit: Nunavut Parks Program, and the resources of their local park	Annually	HAP: 4.5.4	<ul style="list-style-type: none">• “Careers” information package should be distributed to MUI High School, along with other park brochures and interpretive materials that are developed for the park.• NP&SP staff in Rankin Inlet should make an effort to attend at least one career/job fair annually and conduct a school visit to explain parks-related jobs, career and business opportunities to students.
Student Award	Annual Regional Award for secondary school students who are top achievers in a parks-related field of study	Annually	HAP: 4.8	<ul style="list-style-type: none">• Contact high school to identify the student who is the top achiever• Present award on Parks Day or school year-end ceremony

Table 17: Evaluation Indicators Framework for Iqalugaarjuup Nunanga Territorial Park

HAP Action	Evaluation Objectives	HAP Indicators	Evaluation Method	Evaluation Schedule
Interpretive Infrastructure: Park Signage	<ul style="list-style-type: none">• Protect park and park resources• Increased awareness of park and park regulation generally, & resources specifically• Engage visitors and community in park heritage• Enhance visitor experience	<ul style="list-style-type: none">• Negative impacts of visitor use are measurably reduced: specifically ATV damage, vandalism, and disturbance to cultural sites• Increased knowledge and understanding of NP&SP and the park among community residents• Park visitors appreciate the stories of the park• All park user groups and audiences have a positive experience and impression of the park	<ul style="list-style-type: none">• Visitor Surveys• Community open house/meetings• Community survey• NP&SP staff reporting on the state of the park, its resources, and O+M issues	<i>Starting the season after the signage is installed:</i> <ul style="list-style-type: none">• Visitor Surveys: annually• Community open house: annually• Community survey• NP&SP state of the park report: annually
Interpretive Infrastructure: Kivalliq Regional Visitor Centre	<ul style="list-style-type: none">• Increased awareness of park and NP&SP program• Engage visitors and community in park heritage• Enhance visitor experience	<ul style="list-style-type: none">• Increase in park visitation• Increased knowledge and understanding of NP&SP and the park among community residents• Park visitors appreciate the story of the park	<i>Integrate with the methods listed above for park signage:</i> <ul style="list-style-type: none">• Visitor Surveys• Community open house/meetings• Community survey	<ul style="list-style-type: none">• Visitor Surveys: annually• Community open house: annually• Community survey
Promotional and Informational Materials: 1. Park Brochure 2. Park Map Brochure 3. Website	<ul style="list-style-type: none">• Increased awareness of park and park regulation generally, & resources specifically• Engage visitors and community in park heritage• Enhance visitor experience• Support economic development (tourism) in Iqalugaarjuup Nunanga	<ul style="list-style-type: none">• Increased knowledge and understanding of NP&SP and the park among community residents• Consistent and comprehensive park related tourism information available online or through local tourism providers• Increased media coverage of the park and community	<ul style="list-style-type: none">• Monitor the traffic to the NP&SP website for the park, and if possible monitor the downloads from the site• Monitor the numbers of brochures, postcards and maps handed out each season• Monitor media coverage that mentions the park	<i>Starting the season after materials are developed:</i> <ul style="list-style-type: none">• Monitoring will be annual for numbers of visitors accessing the website or taking hand outs• General monitoring of media should occur annually
Public Communications: 1. Newsletter 2. Announcement 3. PowerPoint	<ul style="list-style-type: none">• Increased awareness of park, heritage river and NP&SP program• Engage the community and key stakeholders in park heritage• Provide information to the community and key stakeholders on specific issues, resources, or plans for the park• Support community consultation objectives of NP&SP• Protect public safety through announcements when required	<ul style="list-style-type: none">• Increased knowledge and understanding of NP&SP and the park among community residents• Consistent and comprehensive communications about NP&SP, the park and specific issues• Engage key stakeholders in park issues• Timely public safety announcement concerning the park	<i>Integrate with the methods listed above for park signage:</i> <ul style="list-style-type: none">• Visitor Surveys• Community open house/meetings• Community survey	<ul style="list-style-type: none">• Visitor Surveys: annually• Community open house and community survey: annually

5.3 CHECKLIST FOR ANNUALLY RECURRING HA SCHOOL OUTREACH

NP&SP staff can use this checklist to ensure that a consistent approach is followed for annually recurring outreach initiatives and requirements related to the park's Heritage Appreciation Program.

Prior to the beginning of each school year, NP&SP staff should arrange to meet with high school administrators to:

- Determine how many students will be attending school for the given school year, specifically in grades that will be targeted for HA presentations and programs.
- Discuss potential opportunities for in-park camps that can be planned in conjunction with the school's CTS (Career Technologies Studies) week, or any special projects (e.g. archaeology or other research) scheduled for the park.
- Determine if the school's career counselor has sufficient copies of career brochures and other print materials as required.
- Inquire about career fairs planned for the school year, and request to participate.
- Explore opportunities to offer special presentations related to careers in parks and other park-related topics during the school year.
- Encourage the schools to use the park as an outdoor classroom.

5.4 REQUIREMENTS AND RESPONSIBILITIES FOR IMPLEMENTATION

5.4.1 PARTNERSHIPS FOR PROGRAM DEVELOPMENT AND DELIVERYCHECKLIST FOR ANNUALLY RECURRING HA SCHOOL OUTREACH

The Heritage Appreciation Strategy identifies NP&SP's partners, and the strategic goal of building partnerships in heritage appreciation to identify opportunities for collaboration and partnership, strengthen current partnerships, and define the key heritage appreciation goals that can be achieved through partnerships.

For example, in Rankin Inlet:

- Partnership with the Rankin Inlet CJPMC will help ensure that the park's Heritage Appreciation Program is planned and developed in the best interests of the community;
- Partnerships with local tourism providers (guides, outfitters, others) will help ensure that park interpretive messages are shared, and that park-related tourism benefits are realized in the community;
- Partnerships with hamlets and community organizations will aid NP&SP in the successful delivery of community events, such as Parks Day; and
- Partnerships and communication linkages with Rankin Inlet schools ensure that students are engaged in park heritage appreciation and are aware of park-related career opportunities; and that teachers have access to learning materials related to the park.

These partnerships help to ensure that that planning, development and delivery of park-specific heritage appreciation programs are done in ways that are meaningful to Inuit, and beneficial to the community and audiences for which the program is intended.

5.4.2 RANKIN INLET INUIT TOURISM STRATEGY

As a requirement of the IIBA (Article 4), the Government of Nunavut will be developing Inuit tourism strategies in communities that have a nearby park. These tailor-made tourism strategies will effectively capture and improve upon a variety of park-related tourism products that are specific to each community, such as hospitality, accommodation, and heritage programs and interpretation. For Rankin Inlet, this will involve making the most of tourism-related opportunities at Iqalugaarjuup Nunanga Territorial Park to help stimulate local tourism development and supporting the needs of Community-Based Sustainable Tourism Stakeholders. Park-related tourism services will consider planning, development and training for outfitting, guiding, logistical support, contracting, product promotion and sales, program delivery and special projects.

The park is an essential part of Rankin Inlet's tourism potential and the park's Heritage Appreciation Plan can directly inform the community's tourism strategy by: (1) providing a list of park events and interpretive activities offered in the community/park, and (2) identifying training needs specific to providing park interpretation to tourists. To support the development of a local tourism initiative, information about the community should also be included on the Park's web site and in marketing literature, taking the community's vision for tourism into account. The interconnections between the Rankin Inlet Inuit Tourism Strategy and the park's Heritage Appreciation Program have been identified (where applicable) throughout this Plan.

The Government of Nunavut is also currently developing a territory-wide Tourism Strategy. Where applicable, future implementation of the HAP should also be aligned with the territorial Tourism Strategy.

5.4.3 INUIT CONTRACTING AND BUSINESS OPPORTUNITIES

There will be incentives for Inuit and local businesses for park related contracts, as per the policy for Government of Nunavut and park-specific contracting. All the actions in the implementation plan offer Inuit contracting and business opportunities in construction contracting, shipping of materials, installation, and special project completion.

5.4.4 COMMUNITY INVOLVEMENT

Nunavut's Parks are planned and managed jointly through the NJPMC and CJPMC in each associated community. NP&SP recognizes Inuit rights and obligations under the NA and IIBA, and heritage appreciation is shaped by co-management and consultation with park communities.

Iqalugaarjuup Nunanga's Heritage Appreciation Program has been developed in partnership with the Rankin Inlet CJPMC. The continued development and implementation of the park's heritage appreciation program will need to respect the co-management relationship and requirements set out in the IIBA. This will include abiding by the following IIBA requirements related to heritage appreciation planning:

- Before developing or contracting for the development of any promotional, educational or informational material in connection with a Park, the GN shall consult with the Relevant CJPMC regarding the proposed type, design and content of the material to be developed (IIBA 7.4.1).
- Prior to the installation of any new facilities or infrastructure the CJPMC is to be consulted on the recommended location of facilities, displays, and exhibits to be produced for Iqalugaarjuup Nunanga or in the community (IIBA 7.5.2).
- Engagement with the public or stakeholder organizations may occur for any matter identified by the CJPMC in the management and operation of Iqalugaarjuup Nunanga, but must occur for Oral History and Archaeology Projects (IIBA 14.5)

Additionally, the guidelines presented in NP&SP's planning guide *Culturally-Appropriate Consultation Techniques for use in planning and managing Nunavut's Parks and Special Places* (See Appendix 6.10) should be taken into consideration when NP&SP staff (or contractors) are working with the public, small groups or individuals about matters related to the park's heritage appreciation.



5.5 PROGRAM MONITORING AND EVALUATION

To determine if the Heritage Appreciation Program is achieving its goals and objectives, NP&SP will undertake an evaluation of the Iqalugaarjuup Nunanga HAP as part of the implementation plan. There are four stages recommended for monitoring and evaluating the HAP:

1. Establish the objectives of the evaluation for each implemented action;
2. Determine the indicators to be monitored for each implemented action;
3. Determine the methods(s) that will be used to conduct the evaluation (e.g. paper or online survey; stakeholder interview; collection and analysis of data such as hits to webpages or number of brochures distributed); and
4. Implement the evaluation.

NP&SP will identify key sources for the evaluation (documents, events, and stakeholders), and design the processes by which these sources will be engaged in an evaluation (research, survey, focus groups, interviews, data mining). The Division will implement the evaluation internally or through an independent evaluator.

The general areas to evaluate the Iqalugaarjuup Nunanga HAP could include:

- The contribution of the HAP action to the NP&SP Program and specific heritage appreciation goals for Iqalugaarjuup Nunanga;
- The contribution of the HAP to meet obligation and requirements of the IIBA;
- The effectiveness of the HAP to increase awareness of key messages and interpretive themes among the target audiences; and
- The ability of NP&SP to implement the HAP within available resources (human and financial).

NP&SP should determine the evaluation indicators at the outset of the HAP. The following table recommends possible indicators for each of the HAP actions, and suggested methods and timing of the evaluation.

The Manager of Heritage Appreciation will be responsible for identifying the evaluation tasks to be undertaken each year, and provide a report on the outcomes and requirements for continuing implementation of heritage appreciation and interpretative programs. The following table (Table 10) provides a framework to guide the evaluation process, and the HA Framework (Section 3.7) provides additional guidelines for monitoring and evaluating heritage appreciation programs.



Table 17: Evaluation Indicators Framework for Iqalugaarjuup Nunanga Territorial Park

HAP Action	Evaluation Objectives	HAP Indicators	Evaluation Method	Evaluation Schedule
Community and Cultural Events: 1. Parks Day 2. Community Open House	<ul style="list-style-type: none">Increased awareness of park and park regulation generally, & resources specificallyEngage visitors and community in park heritageEnhance visitor experienceSupport economic development (tourism) in Rankin Inlet	<ul style="list-style-type: none">Increased knowledge and understanding of NP&SP and the park among community residents	<ul style="list-style-type: none">Record attendance at community open house functions	<ul style="list-style-type: none">Monitoring of specific actions (e.g. open house) will be linked to the action
Learn-to Program	<ul style="list-style-type: none">Increased awareness of park and its resourcesEngage community and visitors in park heritageEnhance visitor experienceSupport economic development (tourism) in Rankin Inlet	<ul style="list-style-type: none">Consistent and timely delivery of the Learn-to ProgramIncreased knowledge and understanding of the park and park resourcesIncreased participation by community membersAn increase in park appreciation by residents as measured by less vandalism and more respectful park use	<ul style="list-style-type: none">Record attendance each time the program is delivered	<ul style="list-style-type: none">The program will be offered on a regular schedule annually and evaluation will take place both throughout (formative evaluation) and at the end of the season (summative evaluation)
Education: Grade 7 and 10 Modules	<ul style="list-style-type: none">Ensure that modules are delivered in Rankin Inlet classrooms, and that students:<ul style="list-style-type: none">- Gain a foundation of knowledge in the definition, planning and management of parks- Develop an understanding and appreciation of parks, park planning and park management; and- Demonstrate responsible participation in environmental issues that affect them, their community and the park	<ul style="list-style-type: none">The delivery of education modules in Grade 7 and Grade 10Increased knowledge and understanding of the park and park resourcesIncreased participation in park communications by studentsAn increase in park appreciation by students as measured by less vandalism and more respectful park use	Each module will have a number of evaluation methods. <ul style="list-style-type: none">Students will engage with their peers in the classroom and will have elders engaged in the learning in the modules at both grade levelsRubrics will be created to evaluate students on all of the classroom activitiesStudents in grade 7 will have a number of different activities and presentations to present to their peers, teachers, Elders and parks employees. These presentations will be done throughout the module and will illustrate students' understanding, appreciation and knowledge development of the material presented in the moduleStudents in grade 10 can choose a variety of different ways to present their research findings	<ul style="list-style-type: none">The modules will be taught annually and evaluation will take place both throughout (formative evaluations) and at the end of the modules (summative evaluations).Students in grade 7 will present what they have learned in a 'Parks Fair' type of end of module project that the community will be invited to viewStudents in grade 10 will present their research projects in the classroom and will present at a 'Parks Fair' and will receive credit for completing the research activity
Education: Grade 11 Archaeological Program	<ul style="list-style-type: none">Modules are to delivered in Rankin Inlet when archaeological projects are planned and undertaken in the park:Gain a foundation of knowledge in the definition, planning and management of archaeological resourcesDevelop an understanding and appreciation of best practices in archaeology and cultural resource management in parks; andDemonstrate responsible participation in research and cultural resource management issues that affect them, their community and the park	<ul style="list-style-type: none">The delivery of education modules on archaeology in Grade 11Increased knowledge and understanding of the park and park cultural resourcesIncreased participation in park research by studentsAn increase in park appreciation by students as measured by less vandalism and more respectful park use	Module will have a number of evaluation methods. <ul style="list-style-type: none">Students will engage with their peers in the classroom and will have archaeologists engaged in the learning during archaeological research in the parkRubrics will be created to evaluate students on all of the classroom and in-park research activitiesStudents will can choose a variety of different ways to present their research findings	<ul style="list-style-type: none">The modules will be taught only when archaeological research projects (or camps) are undertaken in the park and evaluation will take place both throughout (formative evaluations) and at the end of the modules (summative evaluations).Students in grade 11 will present their research projects in the classroom and will present at a 'Parks Fair' and will receive credit for completing the research activity





6 APPENDICES

6.1 GLOSSARY AND ACRONYMS

6.2 IIBA OBLIGATIONS RELATED TO HERITAGE APPRECIATION

6.3 INVENTORY OF EXISTING SIGNAGE AND DISPLAYS

6.4 COMMUNICATION TEMPLATES

6.4.1 NEWSLETTER TEMPLATE

6.4.2 ANNOUNCEMENT TEMPLATE

6.4.3 POWERPOINT TEMPLATE

6.5 PARKS DAY

6.5.1 PARKS DAY – SCHEDULE SAMPLE

6.5.2 PARKS DAY CHECKLIST – IQALUIT 2019 SAMPLE

6.6 SAMPLE BROCHURE TEMPLATES

6.6.1 PARK BROCHURE BOOKLET

6.6.2 PARK MAP BROCHURE

6.7 ‘LEARN-TO’ MATERIALS

6.7.1 LEARN-TO GUIDELINES

6.7.2 LEARN-TO CHECKLIST

6.7.3 LEARN-TO REPORTING TEMPLATE

6.8 YOUTH CAMP SAMPLE DOCUMENTS

6.8.1 YOUTH SCIENCE CAMP – KUGLUK TERRITORIAL PARK INFORMATION PACKAGE

6.8.2 YOUTH SCIENCE CAMP – KUGLUK TERRITORIAL PARK SCHEDULE 2020

6.8.3 YOUTH SCIENCE CAMP – REGISTRATION FORM

6.8.4 YOUTH SCIENCE CAMP – CAMP EXPECTATIONS

6.8.5 YOUTH SCIENCE CAMP – PHOTO RELEASE APPROVAL

6.8.6 YOUTH SCIENCE CAMP – STUDENT EQUIPMENT LIST

6.9 SAMPLE EDUCATION MATERIALS

6.9.1 EDUCATION MODULES

6.9.2 'CAREERS IN PARKS' PACKAGE

6.9.3 STUDENT AWARD LETTER AND CERTIFICATE

6.10 CULTURALLY-APPROPRIATE CONSULTATION TECHNIQUES

6.11 IQALUGAARJUUP NUNANGA SEASONAL CALENDAR

6.12 IQALUIT SEASONAL CYCLE (WIP/ IN DRAFT)

6.13 SAMPLE BIBLIOGRAPHIC GUIDE TO THE PHOTO AND DOCUMENT ARCHIVE

